

SLP-V & SLP-5 Configuration for Uni-7 & Uni-5 Korean Characters

With custom firmware, Uni-7 and Uni-5 scales can display and print Korean KIS fonts. Korean characters are entered in SLP-V or SLP-5 and sent to the scales. The following Korean character sizes are available.

- Item Name: 32 x 32 (Large Korean)
- Ingredients: 16 x 16 (Small Korean)

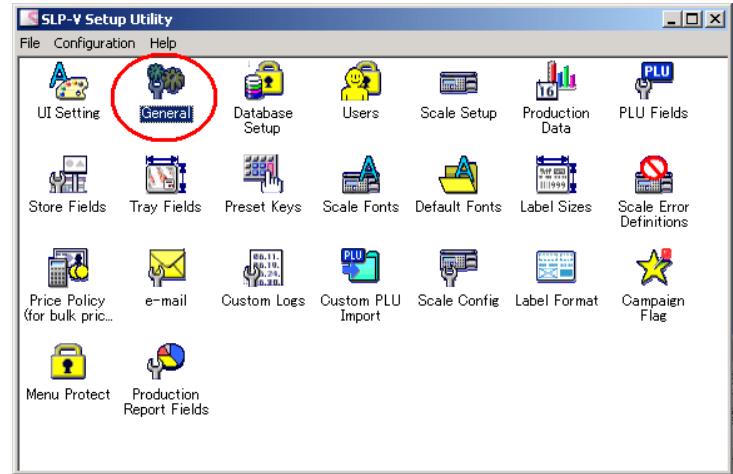
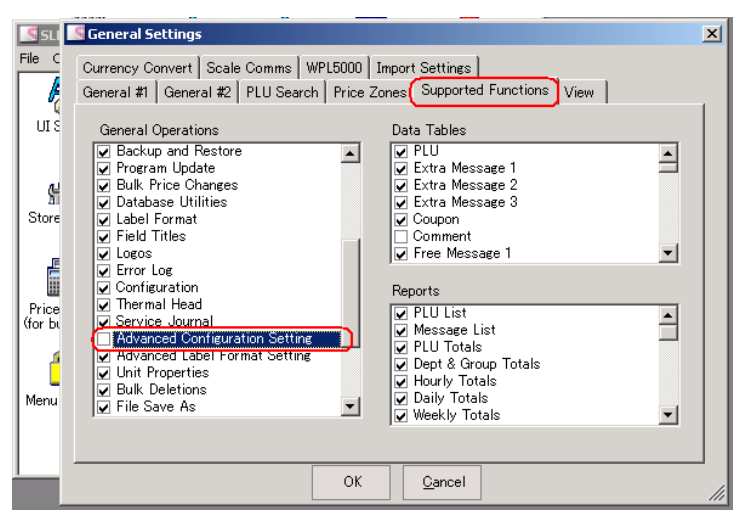
Uni-7 firmware: C1747x

Uni-5 firmware: C1844x

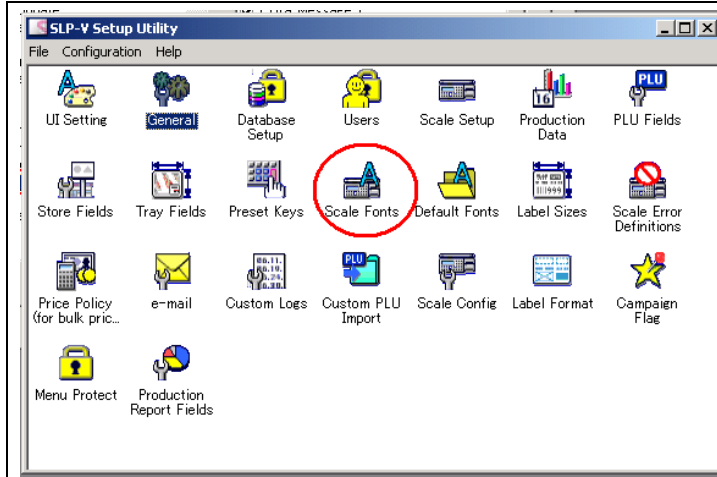
WM-Nano firmware: C1842x

SLP-V or SLP-5 must be configured to use Korean fonts. Refer to the instructions below.

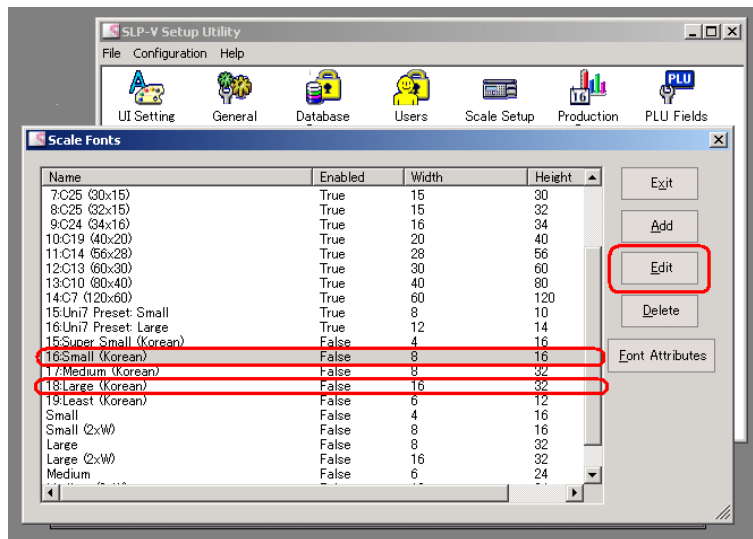
Note: All screen images are from SLP-V.

	<ol style="list-style-type: none">1. Open Setup Utility.2. Select "General".
	<ol style="list-style-type: none">1. Select "Supported Functions".2. Enable "Advanced Configuration Setting".3. Select "OK".4. Close the Setup Utility.

SLP-V & SLP-5 Configuration for Uni-7 & Uni-5 Korean Characters

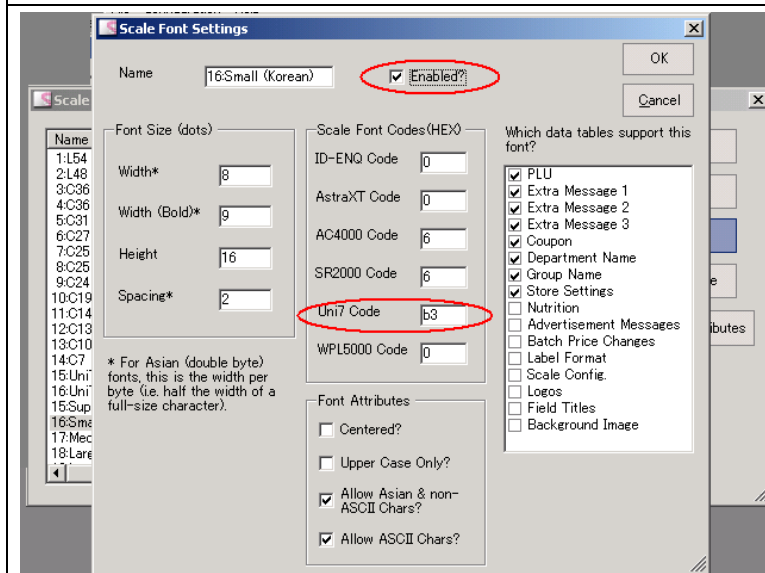


1. Open **Setup Utility**.
2. Select "Scale Fonts"



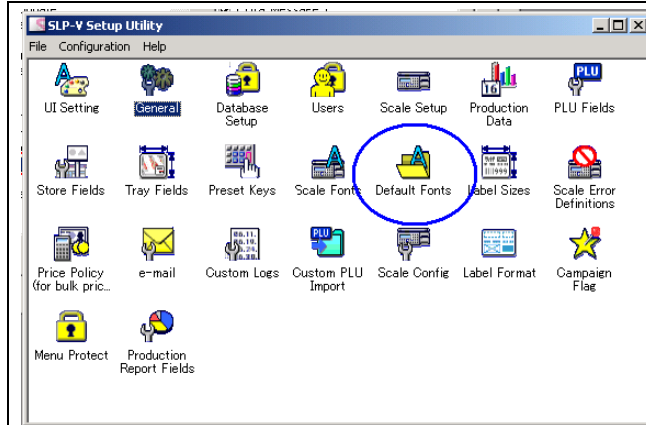
The list of "Scale Fonts" is displayed.

1. Choose "**16: Small (Korean)**"
2. Click "Edit".



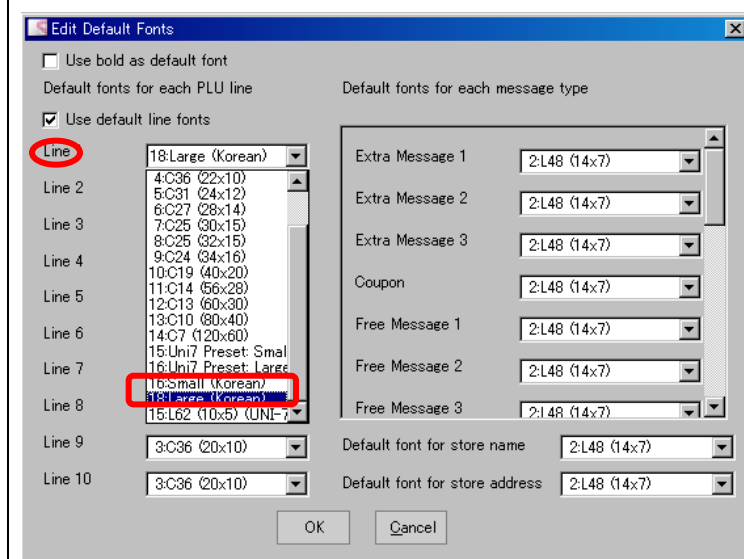
1. Check "Enabled?".
2. Change the Uni-7 "Scale Font Codes (HEX)" value from "b3" to "6" (same value as AC-4000 and SR-2000).
3. Click "OK".
4. Repeat for **18:Large (Korean)**.
5. Check "Enabled?".
6. Change the Uni-7 "Scale Font Codes (HEX)" value from "b7" to "f".
7. Click "OK".

SLP-V & SLP-5 Configuration for Uni-7 & Uni-5 Korean Characters



1. Select "Default Fonts".

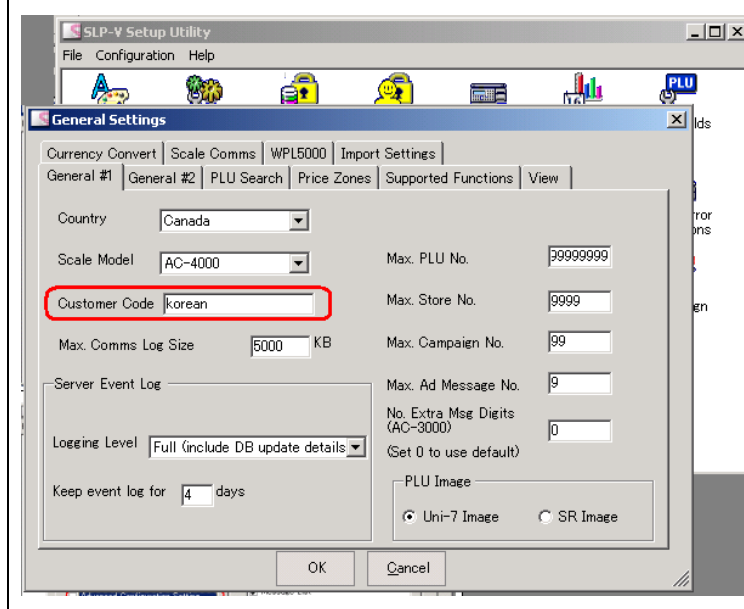
This is to set which line is KIS (Korean) and which line is ASCII (English).



At the "Edit Default Fonts" screen select the proper font for each line.

The Uni-7 only supports Korean on the first line.

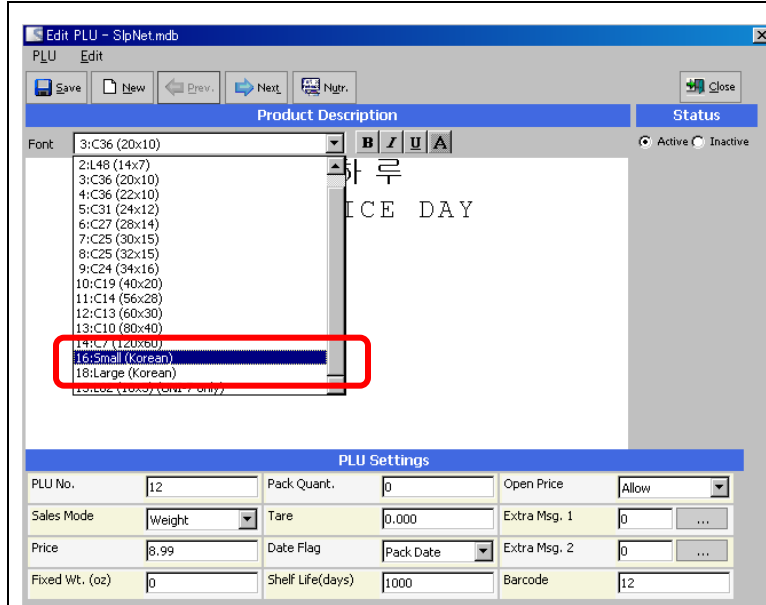
1. Change "Line 1" to "18:Large (Korean)" or "16:Small (Korean)".
2. Set the second line to size "5:C31" or "7:C25".
3. Select "OK" when finished.



1. Select "General" again.
2. Enter "korean" in the "Customer Code" field.
3. Select "OK" when finished.

This completes the Setup Utility configuration for Korean characters.

SLP-V & SLP-5 Configuration for Uni-7 & Uni-5 Korean Characters



Then, when editing a PLU Name be sure the first line is set as "16:Small (Korean)" or "18:Large (Korean)". The second line must be set as a standard English font.

End



Sample Label