

May 6, 2022

Product: Ishida IP-Ai Scale and IP-Ai-P Printer

Contents: Replacing the Label Backing Paper Take-Up



Authorized distributors and their employees can view or download this document from the Rice Lake Retail Solutions distributor site at www.ricelake.com/retail.

Background

The label take-up assembly is made of plastic and can be broken by operators that are unfamiliar with the operation of the clip. Instead of pulling the clip out and down to relieve the tension on the wound-up paper, the clip is lifted up or twisted and it breaks.

This bulletin covers the steps to remove and replace the broken plastic clip portion of the backing paper take-up assembly.

Tools

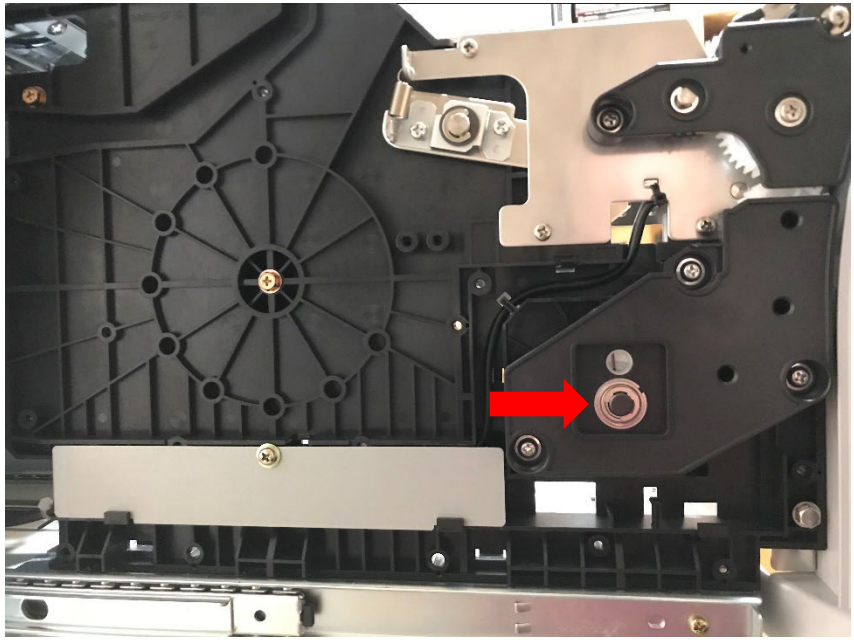
The following tools are recommended to remove and repair the IP-Ai(P) label backing paper take-up.

- Small flat blade screwdriver
- Pliers
- 1/8-inch flat tip punch
- Hammer
- 2x4 with two 1/4" drilled holes 3/4" on center (optional)



Procedure

1. Pull the Cassette out.
2. Remove the labels and backing paper.
3. Remove the E-clip on the left side securing the take-up assembly.
4. Remove the take-up assembly. There will be some resistance due to the tight tolerances.
5. Remove the E-clip holding the plastic end cap cover on the take-up assembly.
6. Remove the cover and the spring.



7. From the opposite end, remove the E-clip securing the shaft to the plastic cylinder.



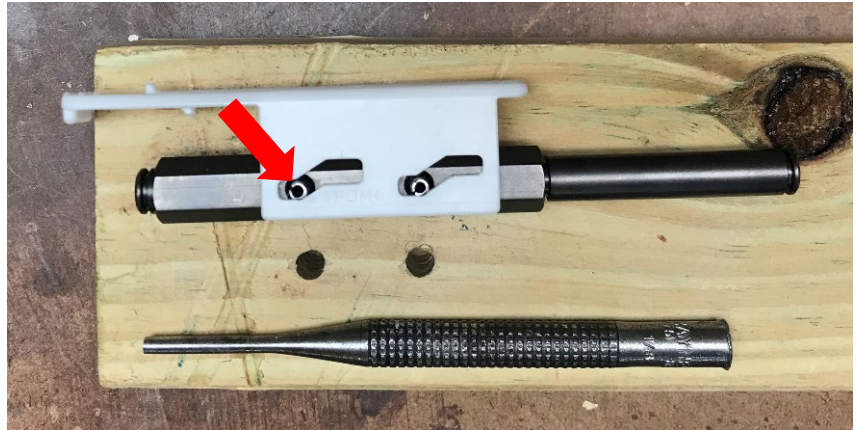
8. Remove the shaft with the plastic clip attached by two spring pins.



Caution

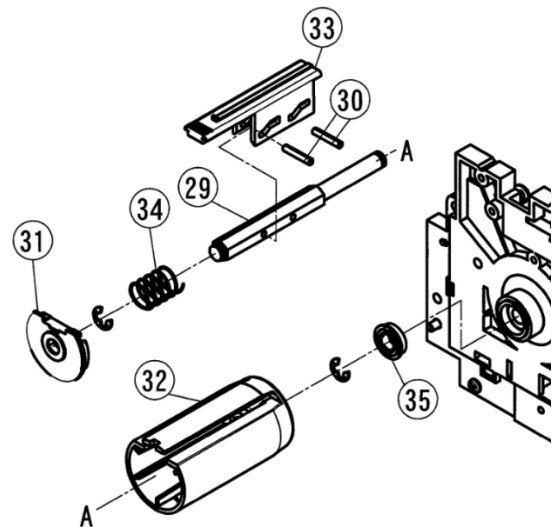
- The plastic clip cannot be bent far enough around the spring pins securing it to the shaft to slide it on/off. The plastic is rigid and the clip will break.
- The spring pins must be punched out of the shaft to replace the clip.

9. Place the shaft on edge with the spring pins facing up.
 10. Use a hammer and 1/8-inch flat tip punch to tap the two spring pins out of the shaft.
- A 2x4 with two 1/4" diameter holes drilled 3/4" on center works well to receive the spring pins.
11. Install the new clip and tap the spring pins in place.
 12. Reassemble in the reverse order.



Parts

Drwg No.	Part No.	Description
29	187357	Shaft, step, wind rolling
30	187358	Pin, spring rolling holder
31	157781	Cover, winding
32	101104	Bobbin, winding
33	101105	Holder, winding, stopper
34	157782	Spring, coil, compressive
35	172635	Bearing, radial
--	46977	E-ring, M6, SST



Reference

- IP-Ai Service Manual, p/n 179840
- Retail Production Equipment Replacement Parts Book, p/n 203628



© Rice Lake Weighing Systems Specifications subject to change without notice.
Rice Lake Weighing Systems is an ISO 9001 registered company.

230 W. Coleman St. • Rice Lake, WI 54868 • USA
U.S. 800-472-6703 • Canada/Mexico 800-321-6703 • International 715-234-9171 • Europe +31 (0)26 472 1319

www.ricelake.com/retail

www.ricelake.mx

www.ricelake.eu

www.ricelake.co.in