

# SURVIVOR<sup>®</sup>

## SRX SERIES

Low Profile Siderail  
Truck Scale



Stacks  
for shipping.  
Assembles on site.

**TOUGHEST  
TRUCK SCALES  
ON EARTH.<sup>®</sup>**

**RICE LAKE<sup>®</sup>**  
WEIGHING SYSTEMS

To be the best by every measure<sup>®</sup>

800-472-6703

[www.ricelake.com](http://www.ricelake.com)

[m.ricelake.com](http://m.ricelake.com)

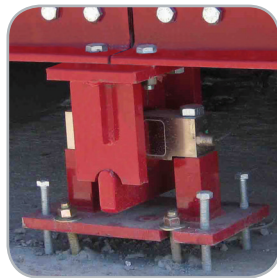
# SURVIVOR® SRX SERIES

## Another choice: SURVIVOR® SRX

Customers asked us to design and build a modular version of a SURVIVOR that could be stacked for more economical shipping. They wanted a low-profile design that required lower, less expensive approaches. Most importantly, they demanded that the new model be every inch a SURVIVOR, the toughest truck scale on Earth.

The SRX features a bolt-together design. An eight inch (20.32 cm) concrete deck is poured on site. The SRX is available in 10 and 11 foot widths (3.05m, 3.35m), and 60 or 70 foot lengths (18.29m, 21.34m) with massive 21-inch (53.34 cm) main beams and eight-inch cross beams.

Rice Lake's exclusive mount design eliminates excess movement by using 100% of the gravity force from the loading action against itself—instantly returning the scale to dead center. Check rods or bumper bolts are eliminated.



G-Force Mount

The optional iQUBE<sup>2</sup> digital diagnostic junction box has the unique ability to digitally monitor and communicate load cell performance, and will compensate for a failing load cell until repairs can be made. iQUBE<sup>2</sup> provides unparalleled speed and

communication and is far more resistant to electrostatic discharge and transient damage from lightning strikes than any traditional j-box.

Out of the box—everything you need to assemble and install: weighbridge, j-box, mounts, load cells and mounting and assembly hardware.



### Specifications

- Gross capacity: 200,000 lb (90.72 kg)
- Platform lengths: 24 ft, 40 ft, 60 ft, 70 ft, 72 ft, 75 ft, 80 ft, 90 ft, 100 ft (7.31 m, 12.19 m, 18.29 m, 21.34 m, 21.94 m, 22.86 m, 24.38 m, 27.43 m, 30.48 m)
- Platform widths: 10 ft, 11 ft (3.05 m, 3.35 m)
- 8 in (20.32 cm) concrete deck
- 70,000 lb (31,751.47 kg) CLC/DTA
- 19 in (48.26 cm) deck profile
- 75,000 lb (34,019.43 kg) capacity load cells
- Pre-assembled G-Force mounts
- Full electronic design
- TuffSeal® FRP j-box

### Features and Benefits

- Superior finish with high solids urethane primer and high solids urethane enamel top coat
- Lightning and Transient Protection
  - Copper transient bypass cables for each load cell
  - Self-contained DC transient protection in homerun cable to indicator
  - Single #10 bare ground conductor cable buried in ground from scale frame to DC transient board in junction box to DC transient board at indicator, then to AC power ground lug
  - 120 VAC uninterrupted power supply/surge protector in AC line before indicator

### Options and Accessories

- Unattended terminals
- RFID systems
- Remote displays
- Custom ticketing systems
- Traffic lights



Your Rice Lake Weighing Systems distributor is:

**RICE LAKE**  
WEIGHING SYSTEMS  
To be the best by every measure®

230 W. Coleman St. • Rice Lake, WI 54868 • USA  
USA 800-472-6703 • CANADA/MEXICO 800-321-6703 • DIRECT 715-234-9171 • FAX: 715-234-6967  
[www.ricelake.com](http://www.ricelake.com) • [m.ricelake.com](http://m.ricelake.com)

An ISO 9001 registered company © 2013 Rice Lake Weighing Systems PN 152597 3/13  
Specifications subject to change without notice