

Costco® Wholesale

Ishida Uni-9

Preventative Maintenance Guide



© Rice Lake Weighing Systems. All rights reserved.

Rice Lake Weighing Systems® is a registered trademark of
Rice Lake Weighing Systems.

All other brand or product names within this publication are trademarks or
registered trademarks of their respective companies.

All information contained within this publication is, to the best of our knowledge, complete and
accurate at the time of publication. Rice Lake Weighing Systems reserves the right to make
changes to the technology, features, specifications and design of the equipment without notice.

The most current version of this publication, software, firmware and all other product
updates can be found on our website:

www.ricelake.com

Revision History

This section tracks and describes manual revisions for awareness of major updates.

Revision	Date	Description
A	January 6, 2023	Initial manual release; firmware version C2229W

Table i. Revision Letter History



Technical training seminars are available through Rice Lake Weighing Systems. Course descriptions and dates can be viewed at www.ricelake.com/training or obtained by calling 715-234-9171 and asking for the training department.

Contents

1.0 Introduction	5
1.1 Safety	5
1.2 Required Materials	6
1.2.1 Lubrication for Ishida Uni-9 / XL	6
2.0 Preventative Maintenance Guide	7
2.1 Screen Display	7
2.2 Keyboard Assembly	7
2.3 Printer	8
2.4 Scale	9
2.5 Data Backup	9
2.6 Firmware	9
2.7 Adjustments, Comments and Parts Required	10
2.8 Sample Labels	11
3.0 Reference Drawings	12
3.1 Main Body Frame	12
3.2 Screen Display: Front With Keyboard	12
3.3 Screen Display: Rear	13
3.4 Printer Unit	13
3.5 Printer Frame	14
3.6 Printer Cassette	14
3.7 Scale	15



Rice Lake continually offers web-based video training on a growing selection of product-related topics at no cost. Visit www.ricelake.com/webinars

1.0 Introduction

The following information is provided by Rice Lake Weighing Systems to assist Authorized Service Offices to perform preventive maintenance on Rice Lake Weighing Systems wrapping and weighing equipment in Costco Wholesale Warehouses. This UNI-9 DB / XL Preventative Maintenance Guide is divided into three intervals - daily, 6-month, yearly. The daily maintenance is the responsibility of the end-user.



NOTE: It is recommended that the servicing technician review these daily maintenance checks with the appropriate manager.

UNI-9 DB/XL Inspection	
Inspection Date:	Service Company:
Costco Store Number:	Technician(s):
Deli Manager Signature	Meat Manager Signature
Deli Prep: Serial Number, Print Count and Overall Condition	Hand Wrap: Serial Number, Print Count and Overall Condition
SN: Head Usage: Good / Fair / Poor	SN: Head Usage: Good / Fair / Poor
Deli Rot: Serial Number, Print Count and Overall Condition	Seafood #1: Serial Number, Print Count and Overall Condition
SN: Head Usage: Good / Fair / Poor	SN: Head Usage: Good / Fair / Poor
Seafood #2: Serial Number, Print Count and Overall Condition	Seafood #3: Serial Number, Print Count and Overall Condition
SN: Head Usage: Good / Fair / Poor	SN: Head Usage: Good / Fair / Poor
Seafood #4: Serial Number, Print Count and Overall Condition	
SN: Head Usage: Good / Fair / Poor	

Table 1-1. Inspection Confirmation

Page 7 – Page 10 should be printed, filled, scanned and returned to Rice Lake Weighing Systems along with photographic documentation of all issues such as: user damage, water damage/corrosion, premature failures, etc.).



NOTE: Allow 2–3 hours for a 6-month inspection and 4–6 hours for a yearly inspection.

1.1 Safety

Safety Definitions:



DANGER: Indicates an imminently hazardous situation that, if not avoided, will result in death or serious injury. Includes hazards that are exposed when guards are removed.



WARNING: Indicates a potentially hazardous situation that, if not avoided, could result in serious injury or death. Includes hazards that are exposed when guards are removed.



CAUTION: Indicates a potentially hazardous situation that, if not avoided, could result in minor or moderate injury.



IMPORTANT: Indicates information about procedures that, if not observed, could result in damage to equipment or corruption to and loss of data.

General Safety



Do not operate or work on this equipment unless this manual has been read and all instructions are understood. Failure to follow the instructions or heed the warnings could result in injury or death. Contact any Rice Lake Weighing Systems dealer for replacement manuals.

1.2 Required Materials

- Isopropyl Alcohol
- Wrench set (metric)
- Clean, lint-free rags
- Compressed Air
- White Grease PN 77933 or CRC SL35600
- Socket set, metric (optional)
- Screwdrivers, assorted
- Allen wrench set (metric)
- Machinist Ruler
- USB flash drive (8 GB or smaller, FAT32format, USB 3.0)
- Adhesive remover (for labels)
- Thermal head cleaning kit
- Test weight set (30 lbs for DB and 60 lbs for XL)

2.0 Preventative Maintenance Guide

While performing preventative maintenance, a certified technician needs to perform and repeat each maintenance task (Section 2.1–Section 2.6) for each Ishida Uni-9 unit (see Table 2-1).

The Preventative Maintenance Guide for the Ishida Uni-9 includes preventative maintenance on:

Unit	✓	Unit	✓	Unit	✓
- Ishida UNI 9 DB / XL		- Ishida UNI 9 DB Deli Seafood #1		- Ishida UNI 9 DB Deli Seafood #4	
- Ishida UNI 9 DB Deli Prep		- Ishida UNI 9 DB Deli Seafood #2		- Ishida UNI 9 XL Hand Wrap	
- Ishida UNI 9 DB Deli Rotisserie		- Ishida UNI 9 DB Deli Seafood #3		-	

Table 2-1. Preventative Maintenance Guide Unit Overview

2.1 Screen Display

See Section 3.2 on page 12 and Section 3.3 on page 13 for assembly.

Check Points	Comments	Tool/Grease/ Program	Replacement Parts	Check Frequency			✓
				D	6m	Y	
Contrast - LCD Display (#103) - Display Control Bd (#104)	- Verify brightness of the display - Replace Invertor or Display as needed	Adjust Menu, Display Check	185546 (#103) 87519 (#104)		X	X	
Touchscreen Operation - Touch Panel (#102) - Sheet (#4)	- Confirm accuracy - Calibrate or replace as needed	Adjust Menu, Touch Screen	87529 (#102) 185539 (#4)		X	X	
Touchscreen Cleaning	- Clean touchscreen display	Cloth		X	X	X	

Table 2-2. Screen Display Maintenance

2.2 Keyboard Assembly

See Section 3.2 on page 12 for assembly.

Check Points	Comments	Tool/Grease/ Program	Replacement Parts	Check Frequency			✓
				D	6m	Y	
Keyboard - Keyboard Assy (#105)	- Confirm all keys function and show as dark squares	Adjust Menu, Key Check	87525 (#105)		X	X	
Keyboard Transparent cover - Sheet (#4)	- Clean keyboard cover - Replace as needed	Cloth	185539 (#4)	X	X	X	

Table 2-3. Keyboard Assembly Maintenance

2.3 Printer

See Section 3.4 on page 13, Section 3.4 on page 13 and Section 3.6 on page 14 for assembly.

Check Points	Comments	Tool/Grease/ Program	Replacement Parts	Check Frequency			✓
				D	6m	Y	
Printing Quality - Print Head (Printer Unit: #102)	- Verify print is complete and legible - Clean print head	Adjust Menu, Printer, Head tab, Test Print: Checker. Cloth. Isopropyl alcohol	158271 (#102)		X	X	

Table 2-4. Printer Maintenance

Check Points	Comments	Tool/Grease/ Program	Replacement Parts	Check Frequency			✓
				D	6m	Y	
Label Feeding Print Roller (Printer Cassette #5)	- Check if printing expands or contracts. Check and clean print roller - Check for cuts - Remove paper dust	Cloth Isopropyl alcohol Vacuum	163028 (#5)		X	X	
Label Gap Sensor - Photo interrupter, reflection Printer Frame (Printer Frame #100) - Block B, Prism (Printer Cassette #14)	- Check that sensor readings are normal (baseline near 60, spike near 160). - Clean, calibrate, or replace sensors and prism as needed - Clean pin hole on the cassette	Adjust Menu, Printer, Label Feed tab	87533 (#100) 182039 (#14)		X	X	
Peel sensor - Transmitter, Left Side (Printer Frame #101) - Receiver, Right Side (Printer Frame #102)	- Check that sensor readings are normal (over 200 when blocked and under 40 when open) - Clean, calibrate, or replace sensors as needed	Adjust Menu, Printer, Peel Sensor tab	158272 (#101) 158274 (#102)		X	X	
Drive Gears - Gear Flat (Printer Frame #6) - Timing Pulley S2M (Printer Cassette #6) - Timing pulley, S2M, with gear (Printer Cassette #17) - Pulley, idler (Printer Cassette #18) - Torque limiter (Printer Cassette #23) - Timing belt, S2M (Printer Cassette #195)	- Clean debris - Examine gears and belt for cracks or chips - Verify cassette holds and printer drive gears mesh well at home position		181151 (Frame #6) 175372 (Cassette #6) 175375 (#17) 181141 (#18) 181144 (#23) 181146 (#195)			X	
Home position - Cassette Sensor (Main Body Frame #102) - Seal Sensor (Printer Cassette #31)	- Clean and inspect the Seal and Sensor for wear	Cloth. Isopropyl alcohol.	93235 (#31)			X	
Take Spool - Bobbin Roll (Printer Cassette #24)	- Clean and inspect	Cloth. Isopropyl alcohol	162104 (#24)		X	X	

Table 2-4. Printer Maintenance (Continued)

2.4 Scale

See Section 3.7 on page 15 for assembly.

Check Points	Comments	Tool/Grease/ Program	Replacement Parts	Check Frequency			✓
				D	6m	Y	
Weighing	- Correct weighing	1 lb. test weight		X	X	X	
Check zero and calibration		30 lb. test weights			X	X	
Shift test in all four		5 lb. test weight			X	X	
Seal	- Refer to local regulations	Lead or paper seal			X	X	
Stainless Scale Platter - Platter (#1)	- Replace if damaged	Soap & Water (Daily)	171675 (#1)		X	X	

Table 2-5. Scale Maintenance

2.5 Data Backup

Check Points	Comments	Tool/Grease/ Program	Replacement Parts	Check Frequency			✓
				D	6m	Y	
	<ul style="list-style-type: none"> - Insert a blank USB stick of 8 gig or less into the access hatch on the upper left side - Create and name a backup location under "OUTPUT SELECT" 	Setup Menu, File Save/Load, Scale USB tab, Output Select, Exec, All Sel, Exec, Exec. Also possible with SLP-5.			X	X	

Table 2-6. Data Backup Maintenance

2.6 Firmware

Check Points	Comments	Tool/Grease/ Program	Replacement Parts	Check Frequency			✓
				D	6m	Y	
Main Firmware	<ul style="list-style-type: none"> - Load firmware on a blank USB stick of 8 gig or less - Insert into the access hatch on the upper left side - Reboot Afterwards 	Adjust Menu, Download, Main tab "USB>MAIN (PRG+IMG)", USB Memory Folder, select file, EXEC, EXEC.			X		
Sub Apps	<ul style="list-style-type: none"> - Load both sub apps; reboot after each - Take a second backup once the firmware upgrades have been completed 	Adjust Menu, Download, Sub App tab, Printer, Exec, Exec. Reboot. Adjust Menu, Download, Sub App tab, FPGA, Exec, Exec. Reboot.					

Table 2-7. Firmware Maintenance

2.8 Sample Labels

3.3 Screen Display: Rear

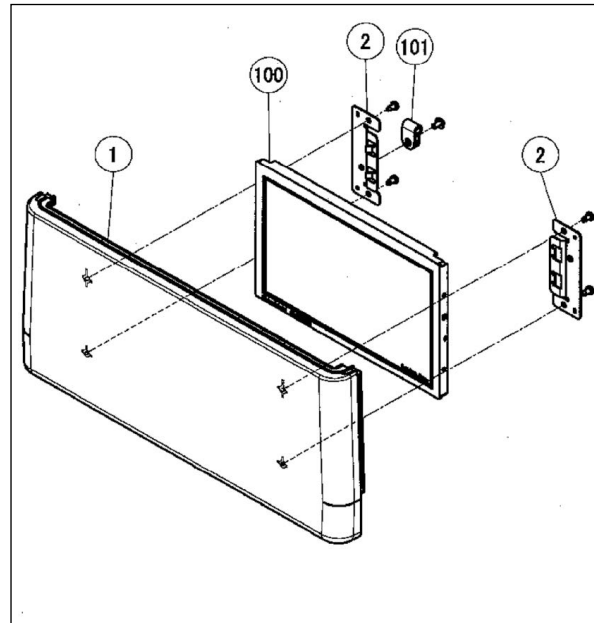


Figure 3-3. Screen Display: Rear Assembly

3.4 Printer Unit

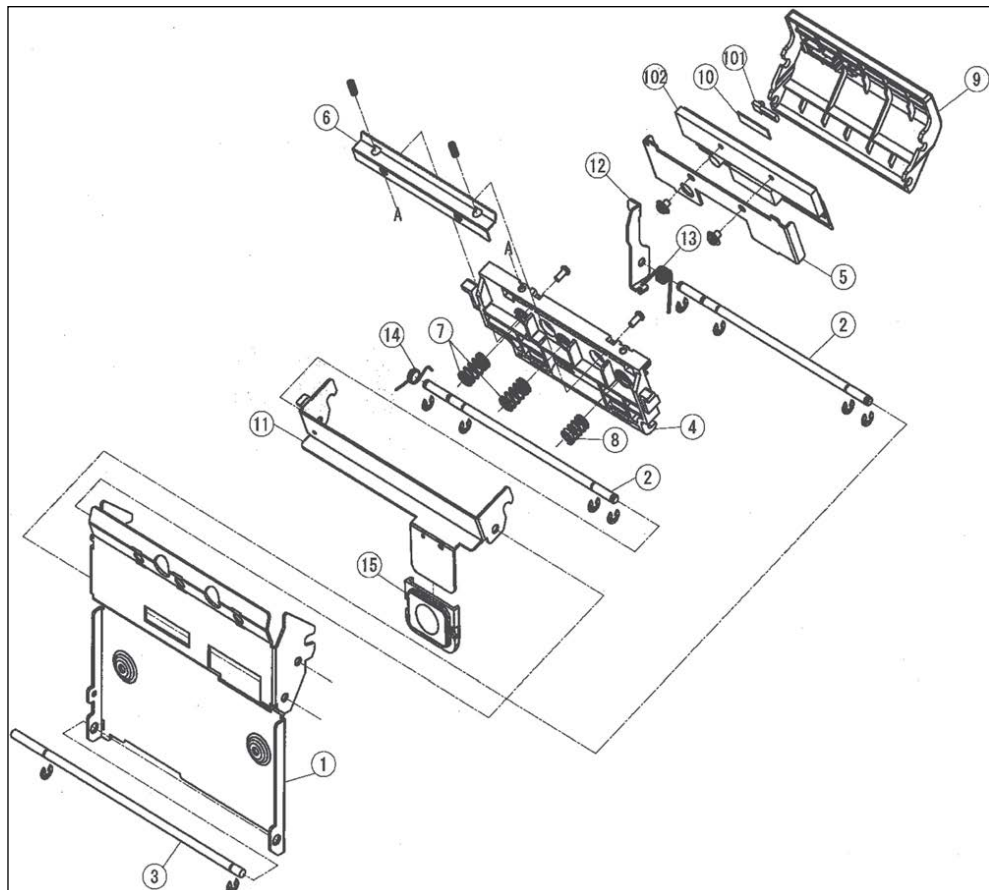


Figure 3-4. Printer Frame Assembly

3.5 Printer Frame

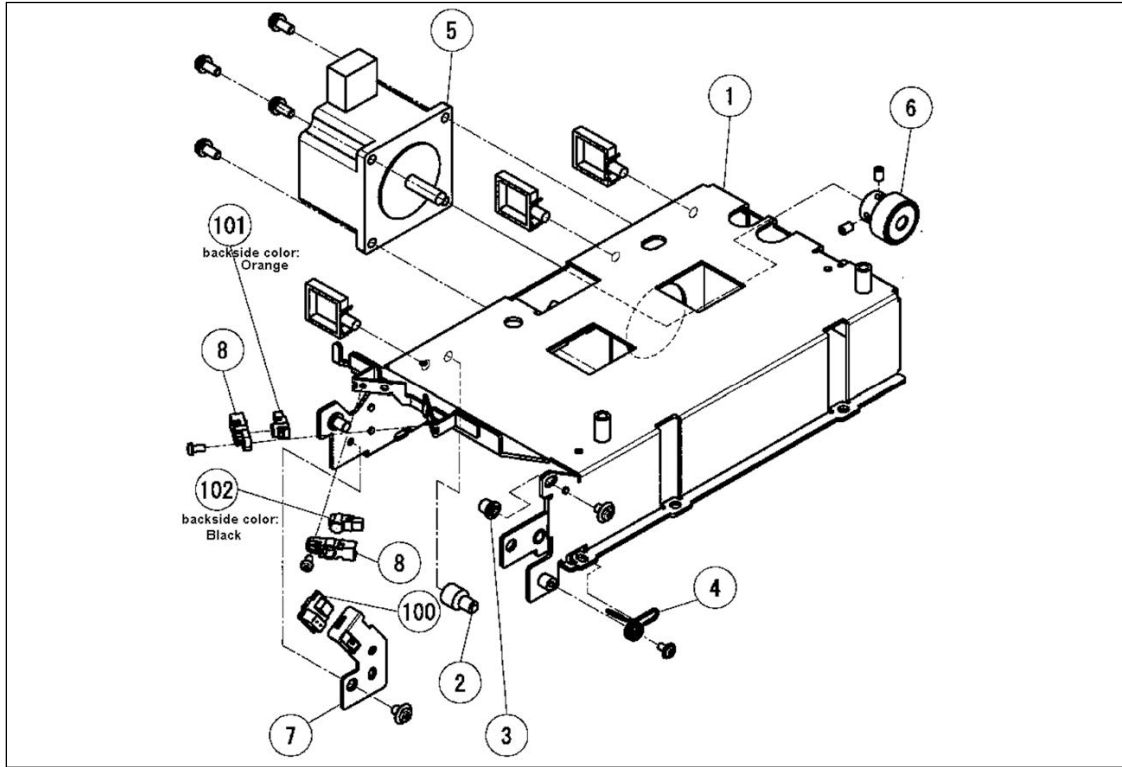


Figure 3-5. Printer Frame Assembly

3.6 Printer Cassette

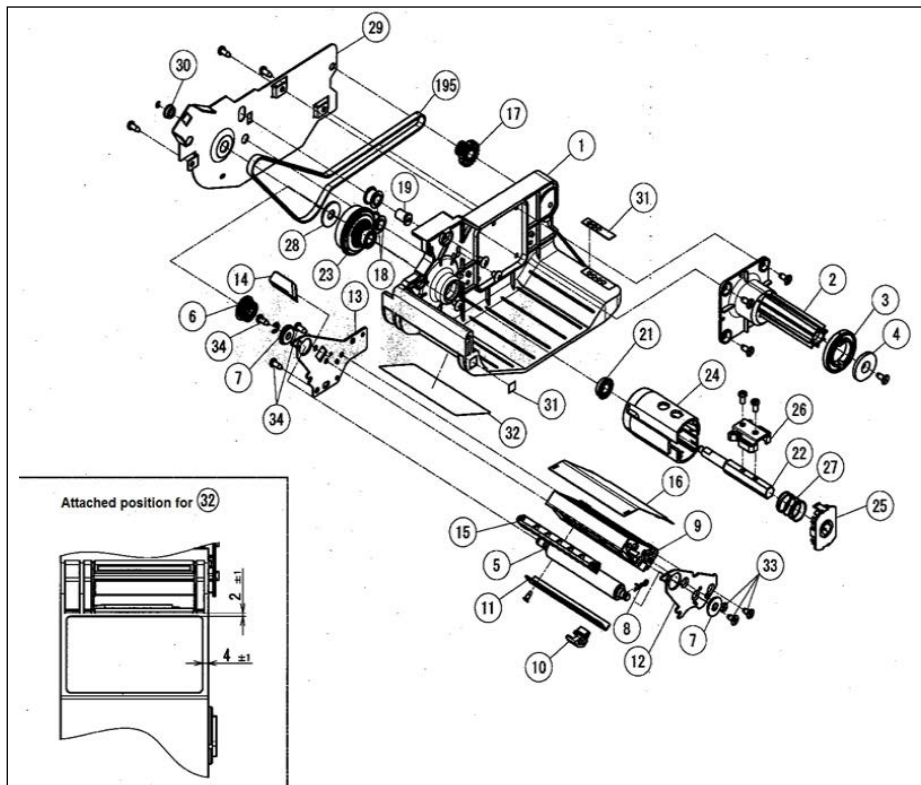


Figure 3-6. Printer Cassette Assembly

3.7 Scale

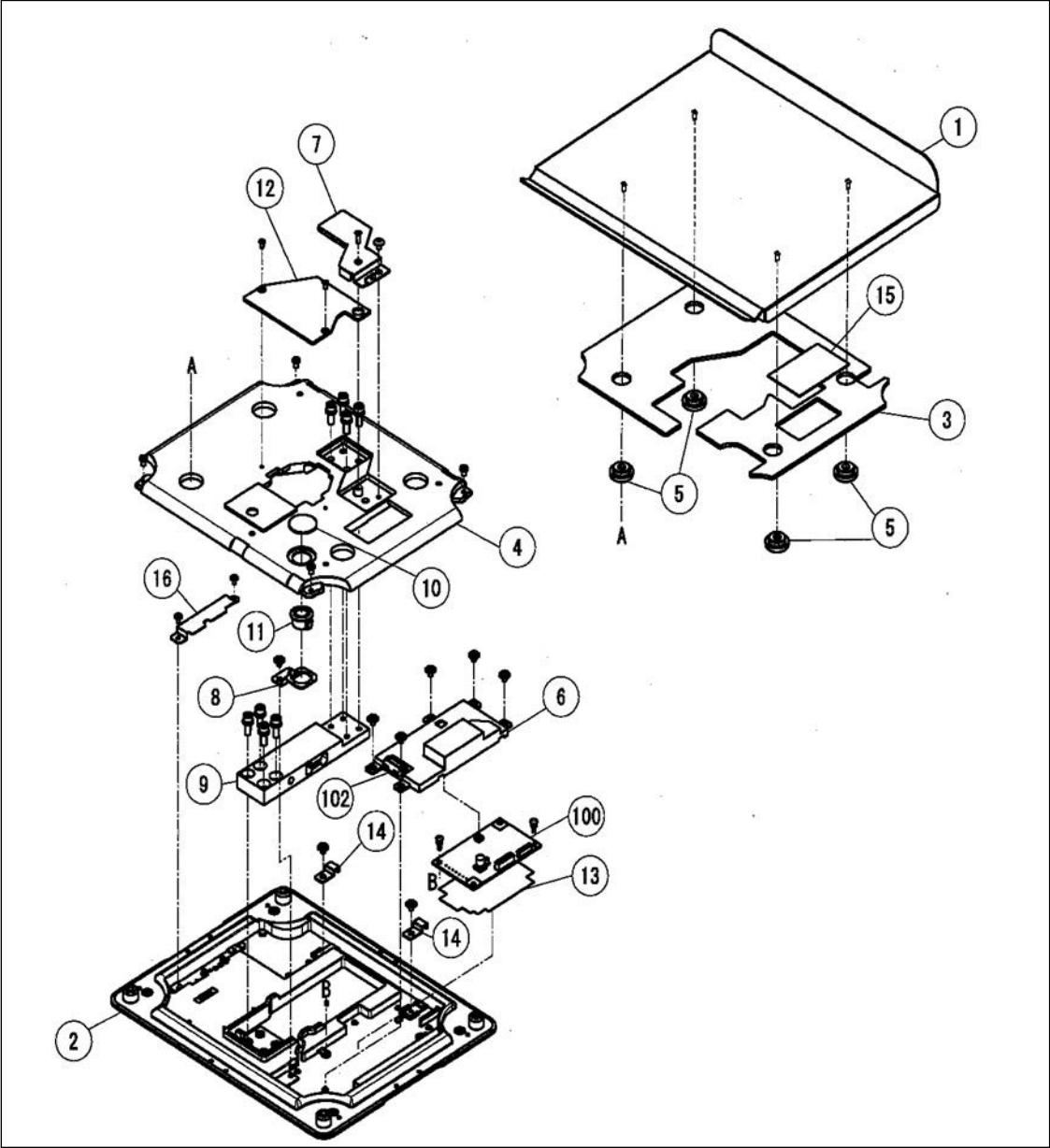


Figure 3-7. Scale Assembly



© Rice Lake Weighing Systems Content subject to change without notice.

230 W. Coleman St. • Rice Lake, WI 54868 • USA

U.S. 800-472-6703 • Canada/Mexico 800-321-6703 • International 715-234-9171 • Europe +31 (0)26 472 1319