

RL9000TWM Series

Tank, Hopper and Vessel Weighing Assembly



Picture is a representation of actual product

The RL9000TWM Series stainless steel weigh module is ideal for use in tank, hopper, vessel and many other applications. The low-profile design offers an economical solution in a competitive marketplace. This rugged, high-precision mount is designed for easy installation and does not require check rods or other stabilizing hardware. The stainless steel construction and welded seal offer additional protection in washdown areas.

Load Cell Specifications

- Full Scale Output:**
3,0 (± 0,1%) mV/V
- Bridge Resistance:**
350 ohms
- Material/Finish:**
Stainless steel
- Safe Overload:**
150% full scale
- Rated Excitation:**
5-10VDC
- Operating Temperature:**
-18° C to 66° C
- Insulation Resistance:**
5.000 megohms
- Non-linearity:**
1 k-100 k 0,05% FS
150 k-450 k 0,1% FS
- Non-repeatability:**
1 k-100 k 0,02% FS
150 k-450 k 0,03% FS
- Seal Type:**
Welded-seal IP67
- Cable Length:**
7,6m
- Cable Color Code:**
Green+ Excitation
Black.....- Excitation
White+ Signal
Red- Signal
- Warranty:**
Two-year limited warranty



Assembly with integral
RL9000TWM compression disk load cell.

Standard Features

- Capacities: 454 kg-204.116,6 kg
- Very low profile design
- 3,0 mV/V output
- Self-centering
- Self-checking assembly
- Offers 100% sideload, 100% uplift and 150% static safe load and 300% ultimate static overload protection
- Stainless steel construction
- Welded seal
- Weighs accurately with as much as a 3° non-parallel load
- Includes 7,6 m load cell cable

Applications

- Tank, hopper or vessel weighing

Optional Features

- Stainless steel top plates (68.038.9 kg-204.116,6 kg have mild steel painted base plate)

Complete Kit Includes

- One JB4SS NEMA Type 4X stainless steel signal trim junction box
- Three or four stainless steel mounting assemblies
- 7,6 m of our hostile environment EL147HE SURVIVOR® load cell cable

Load Cell Certifications



WEIGH MODULES WITH LOAD CELLS
RL9000TWM Series
 Tank, Hopper and Vessel Weighing Assembly

LOAD CELLS

www.ricelake.com/global | Phone: +31 (0) 26 472 1319

RICE LAKE

Order Information

Load Rating (Per Module)	Part#	Price
Single Module		
453,6 kg	84353	Consult
1.134 kg	84354	Consult
2.268 kg	84355	Consult
4.535,9 kg	84356	Consult
6.803,9 kg	84357	Consult
9.071,8 kg	84358	Consult
11.339,8 kg	84359	Consult
15.875,7 kg	84360	Consult
22.679,6 kg	84361	Consult
27.215,5 kg	84362	Consult
34.019,4 kg	84363	Consult
45.359,2 kg	84364	Consult
68.038,9 kg	84365	Consult
90.718,5 kg	84366	Consult
113.398,1 kg	84368	Consult
136.077,7 kg	84369	Consult
181.436,9 kg	84370	Consult
204.116,6 kg	84371	Consult
3-Module Kit		
453,6 kg	98974	Consult
1.134 kg	98980	Consult
2.268 kg	98981	Consult
4.535,9 kg	98982	Consult
6.803,9 kg	98983	Consult
9.071,8 kg	98984	Consult
11.339,8 kg	98985	Consult
15.875,7 kg	98986	Consult
22.679,6 kg	98987	Consult
27.215,5 kg	98988	Consult
34.019,4 kg	98989	Consult
45.359,2 kg	98990	Consult
68.038,9 kg	98991	Consult
90.718,5 kg	98992	Consult
113.398,1 kg	98993	Consult
136.077,7 kg	98994	Consult
181.436,9 kg	98995	Consult
204.116,6 kg	98996	Consult
4-Module Kit		
453,6 kg	98997	Consult
1.134 kg	98998	Consult
2.268 kg	98999	Consult
4.535,9 kg	99000	Consult
6.803,9 kg	99001	Consult
9.071,8 kg	99002	Consult
11.339,8 kg	99003	Consult
15.875,7 kg	99004	Consult
22.679,6 kg	99005	Consult
27.215,5 kg	99006	Consult
34.019,4 kg	99007	Consult
45.359,2 kg	99008	Consult
68.038,9 kg*	99009	Consult
90.718,5 kg	99010	Consult
113.398,1 kg	99011	Consult
136.077,7 kg	99012	Consult
181.436,9 kg	99013	Consult
204.116,6 kg*	99014	Consult

* 68.038,9 kg-204.116,6 kg have mild steel painted base plates

Load Rating (Per Module)	Part#	Price
Top Plates (Stainless Steel) with bolts		
453,6 kg-6.803,9 kg	91207	Consult
9.071,8 kg-22.679,6 kg	91210	Consult
27.215,5 kg-45.359,2 kg	91211	Consult
68.038,9 kg-90.718,5 kg	91213	Consult
113.398,1 kg-204.116,6 kg	91215	Consult
Top Plates (Mild Steel) with bolts		
453,6 kg-6.803,9 kg	124758	Consult
9.071,8 kg-22.679,6 kg	125141	Consult
27.215,5 kg-45.359,2 kg	124759	Consult
68.038,9 kg-90.718,5 kg	124760	Consult
113.398,1 kg-204.116,6 kg	124761	Consult
Dummy Weigh Modules (non-functioning)		
453,6 kg-4.535,9 kg	158749	Consult
6.803,9 kg	158750	Consult
9.071,8 kg-22.679,6 kg	158752	Consult
27.215,5 kg-45.359,2 kg	158753	Consult
68.038,9 kg-90.718,5 kg	158754	Consult
113.398,1 kg-204.116,6 kg	158755	Consult

* 68.038,9 kg-204.116,6 kg have mild steel painted base plates

Shims - Order Information

Capacity	Thickness	Material	Part #	Price
Shims				
453,6 kg-6.803,9 kg	1,6	SST	167001	Consult
453,6 kg-6.803,9 kg	3,2	SST	167002	Consult
453,6 kg-6.803,9 kg	6,4	SST	167003	Consult
453,6 kg-6.803,9 kg	1,6	MS	167004	Consult
453,6 kg-6.803,9 kg	3,2	MS	167005	Consult
453,6 kg-6.803,9 kg	6,4	MS	167006	Consult
9.071,8 kg-22.679,6 kg	1,6	SST	167008	Consult
9.071,8 kg-22.679,6 kg	3,2	SST	167009	Consult
9.071,8 kg-22.679,6 kg	6,4	SST	167010	Consult
9.071,8 kg-22.679,6 kg	1,6	MS	167011	Consult
9.071,8 kg-22.679,6 kg	3,2	MS	167012	Consult
9.071,8 kg-22.679,6 kg	6,4	MS	167013	Consult
27.215,5 kg-45.359,2 kg	1,6	SST	167014	Consult
27.215,5 kg-45.359,2 kg	3,2	SST	167015	Consult
27.215,5 kg-45.359,2 kg	6,4	SST	167016	Consult
68.038,9 kg-90.718,5 kg	1,6	SST	167020	Consult
68.038,9 kg-90.718,5 kg	3,2	SST	167021	Consult
68.038,9 kg-90.718,5 kg	6,4	SST	167022	Consult
113.398,1 kg-204.116,6 kg	1,6	SST	167026	Consult
113.398,1 kg-204.116,6 kg	3,2	SST	167027	Consult
113.398,1 kg-204.116,6 kg	6,4	SST	167028	Consult

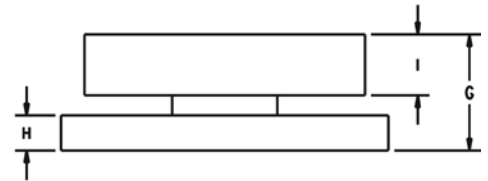
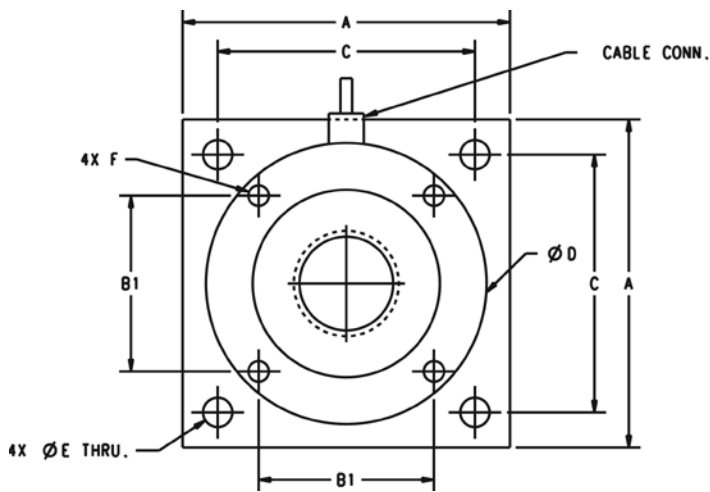
SST = Stainless steel

MS = Mild steel

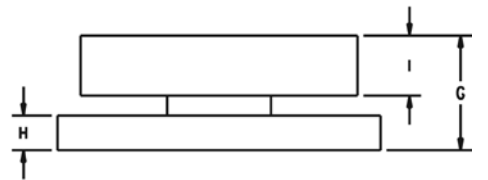
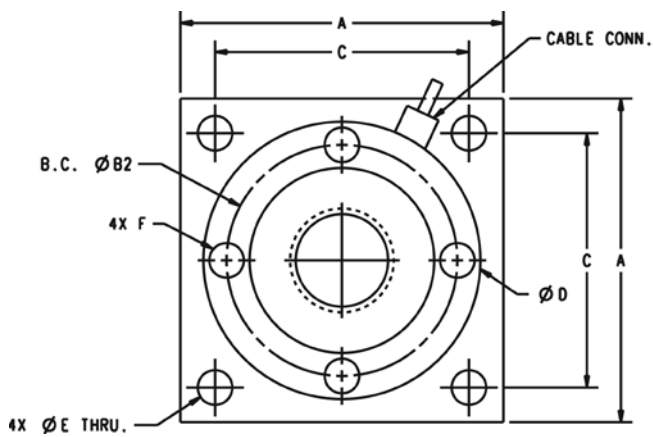
Threads are UN style. Metric is not available.

RL9000TWM Series

Tank, Hopper and Vessel Weighing Assembly

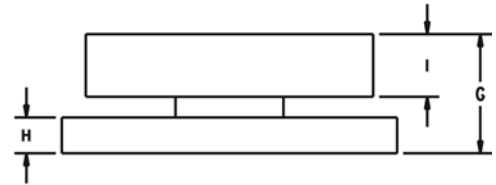
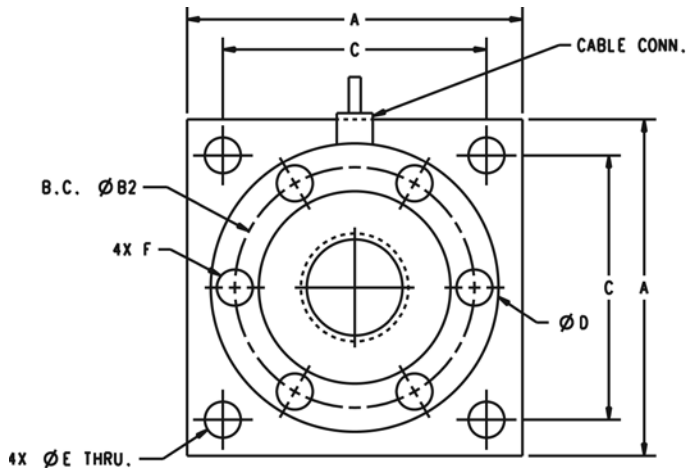
**Dimensions (mm)**

Rated Capacity	A	B1	C	D	E	F	G	H	I	Conduit Adapter
453,6 - 4.535,9 kg	101,6	50,8	82,6	88,9	10,2	3/8-16 UNC	34,3	9,5	19,1	N/A
6.803,9 kg	101,6	50,8	82,6	88,9	10,2	3/8-16 UNC	40,6	15,9	19,1	N/A
9.071,8 - 22.679,6 kg	177,8	95,3	140	152,4	16	1/2-13 UNC	63	19,1	33	1/2-14 NPT
27.215,5 - 45.359,2 kg	203,2	108	165,1	177,8	20,1	3/4-16 UNF	63,5	25,4	33	1/2-14 NPT

**Dimensions (mm)**

Rated Capacity	A	B2	C	D	E	F	G	H	I	Conduit Adapter
68.038,9 - 90.718,5 kg	254	199	203,2	228,6	27,9	1-14 UNF	120,7	50,8	43,2	1/2-14 NPT

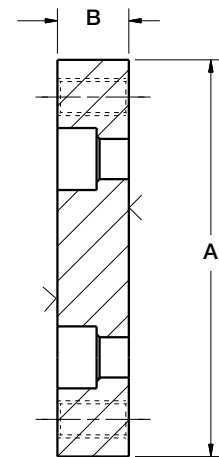
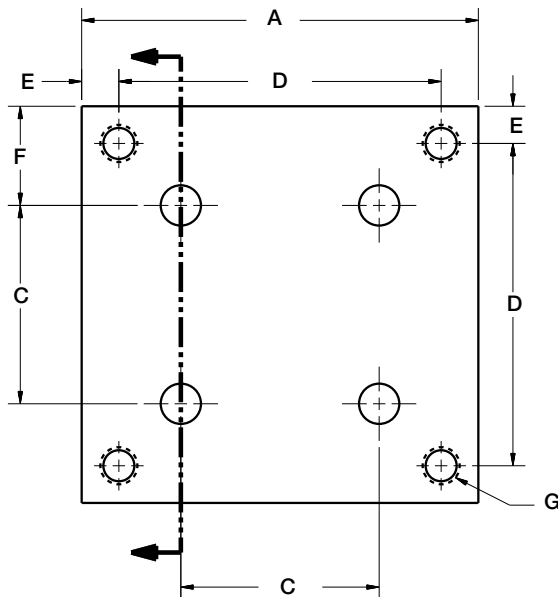
WEIGH MODULES WITH LOAD CELLS
RL9000TWM Series
 Tank, Hopper and Vessel Weighing Assembly



Dimensions

Rated Capacity	A	B2	C	D	E	F	G	H	I	Conduit Adapter
113,398 - 204.116,6kg	279,4	196,9	228,6	228,6	33	7/8-14 UNF	163,1	76,2	57,2	4/2-14 NPT

Optional Top Plates



Dimensions

Rated Capacity	A	B	C	D	E	F	G
kg/mm							
453,6 - 6.803,9kg	101,6	18,3	50,8	82,6	9,7	25,4	3/8-16 UNC
9.071,8 - 22.679,6kg	177,8	24,6	95,3	140	19,1	41,1	5/8-11 UNC
27.215,5 - 45.359,2kg	203,2	37,1	108	165,1	19,1	47,8	3/4-16 UNF
68.038,9 - 90.718,5kg	254	49,3	140,5	203,2	25,4	57,2	1-14 UNS
113.398,1 - 204.116,6kg	279,4	74,7	196,9 B.C.	228,6	25,4	25,4	1-1/4-12 UNF