

RL9000TWM-HT

Tank, Hopper and Vessel Weigh Module



Picture is a representation of actual product

The RL9000TWM-HT is the latest addition to the popular RL9000TWM Series weigh module. The RL9000TWM-HT is a high temperature version that is designed to operate in temperatures up to 204°C.

The integral 7,6m of FEP cable complements the RL9000TWM-HT weigh module.

Load Cell Specifications

Full Scale Output:

3,0(± 0,1%) mV/V

Bridge Resistance:

700 ohms

Material/Finish:

Stainless steel

Safe Overload:

150% full scale

Rated Excitation:

5-10VDC

Operating Temperature:

-18° C to 204° C

Insulation Resistance:

5.000 megohms

Non-linearity:

0,05% FS

Non-repeatability:

0,02% FS

Seal Type:

Welded-seal IP67

Cable Length:

7,6m FEP jacket

Cable Color Code:

Green+ Excitation

Black.....- Excitation

White+ Signal

Red- Signal

Warranty:

Two-year limited warranty

Standard Features

- Capacities: 453,6 kg-22.679,6 kg
- Very low profile design
- 3,0 mV/V output
- Self-centering
- Self-checking assembly
- Offers 100% side load, 100% uplift and 150% safe load and 300% ultimate overload protection
- Stainless steel construction
- Welded-seal
- Weighs accurately with as much as a 3° on-parallel load
- Complete with 7,6 m FEP cable

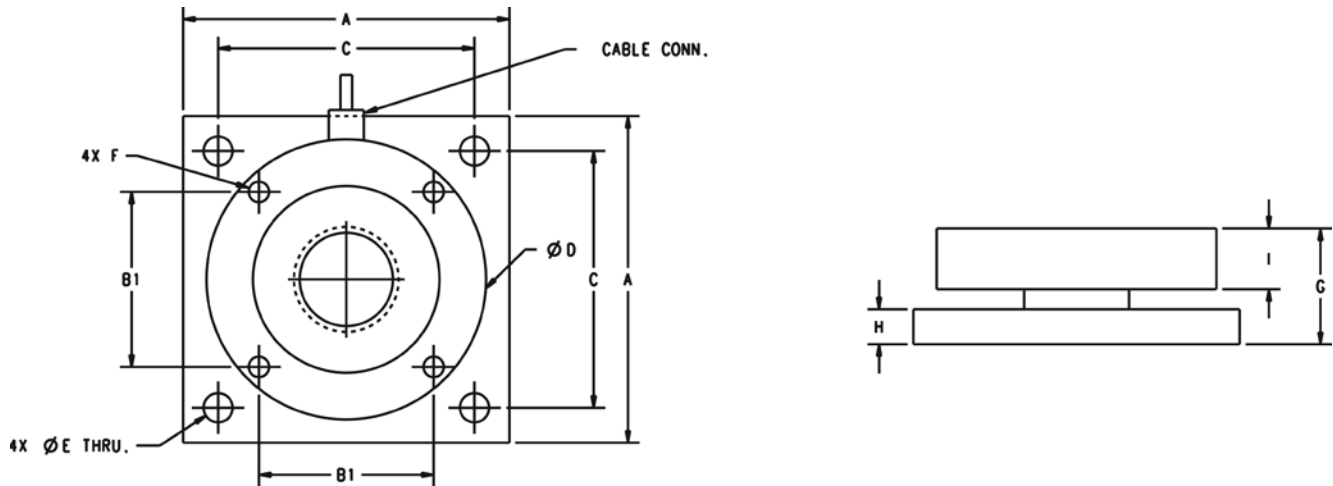
Optional Features

- Stainless steel top plates
- Higher capacities available upon request

Applications

- Tank, hopper, or vessel weighing
- High temperature applications

WEIGH MODULES WITH LOAD CELLS
RL9000TWM-HT
 Tank, Hopper and Vessel Weigh Module



Dimensions

Rated Capacity	A	B1	C	D	E	F	G	H	I	Conduit Adapter
kg/mm										
453,6 - 4.535,9 kg	101,6	50,8	83,6	88,9	10,2	3/8-16 UNC	34,3	9,5	19,1	—
6.803,9 kg	101,6	50,8	83,6	88,9	10,2	3/8-16 UNC	40,6	15,9	19,1	—
9071,8 - 22.679,6	177,8	95,3	139,7	152,4	16	1/2-13 UNC	63	19,1	33	1/2-14 NPT

Order Information

Load Rating (per module)	Part#	Price
Single Module		
453,6 kg	117050	Consult
1.134 kg	117051	Consult
2.268 kg	117052	Consult
4.535,9 kg	117140	Consult
6.803,9 kg	117053	Consult
9071,8 kg	117054	Consult
11.339,8 kg	117055	Consult
15.875,7 kg	117056	Consult
22.679,6 kg	117057	Consult
Top Plates (Stainless Steel) with bolts		
453,6 - 6.803,9 kg	91207	Consult
9.071,8 - 22.679,6 kg	91210	Consult
Top Plates (Mild Steel) with bolts		
453,6 - 6.803,9 kg	124758	Consult
9.071,8 - 22.679,6 kg	125141	Consult

Threads are UN style. Metric is not available.