

RL30

Small to Medium Capacity



Base plate provides good mounting option for the RL30 load cell. Designed to custom fit the bending beam load cell design.

Standard Features

- Available in zinc or stainless steel
- Designed to work with RL30 load cells

Order Information

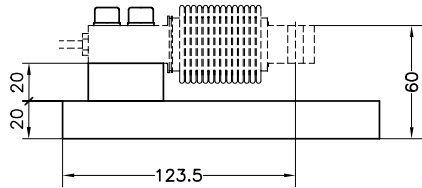
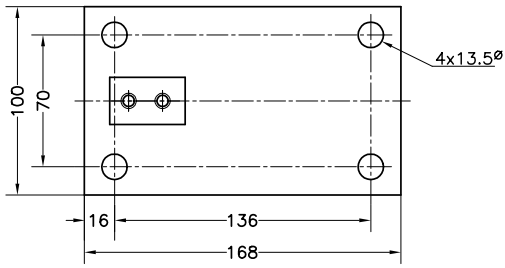
Picture is a representation of actual product

Load Rating	Part#	Description	Price
Base Plate			
5 to 500 kg	160870	Zinc plated	Consult
5 to 500 kg	160874	Stainless steel	Consult
Lift-off Prevention			
5 to 500 kg	161104	Zinc plated	Consult
5 to 500 kg	161105	Stainless steel	Consult
Neoprene Rubber Mount Set Top			
5 to 200 kg	157677		Consult

Note: Refer to page 234 for load cell information

Applications

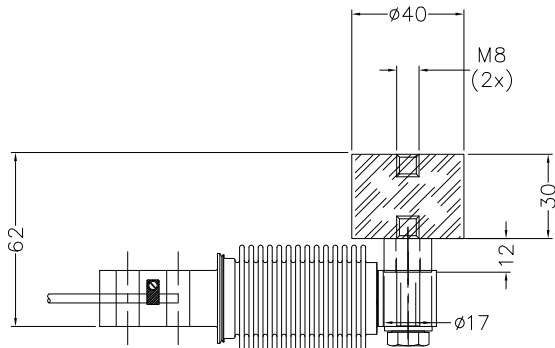
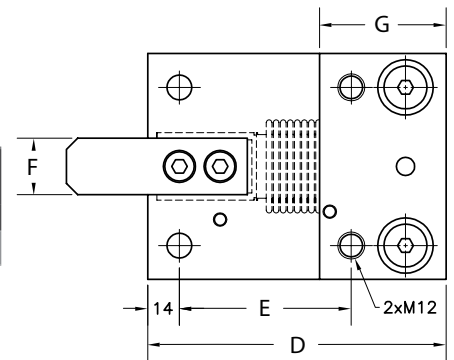
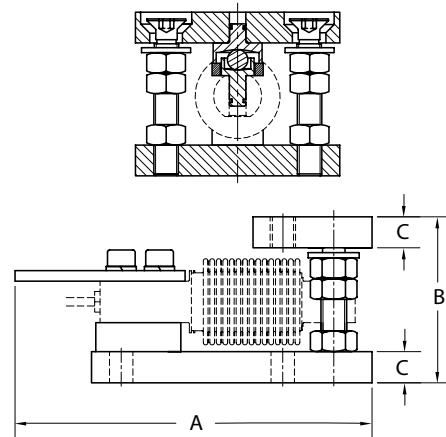
- Small tanks and hoppers
- Conveyors and in-motion weighing
- Small platform scales



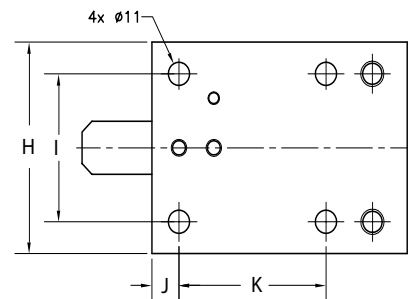
Base Plate

Dimensions

Rated Capacity	A	B	C	D	E	F	G	H	I	J
5 to 500 kg	168	136	16	100	70	124	60	4X14	20	20



Neoprene Rubber Mount Set Top



Lift-off Prevention

Dimensions

Rated Capacity	A	B	C	D
5 to 200 kg	40	30	17	12

Dimensions

Rated Capacity	A	B	C	D	E	F	G	H	I	J	K
5 to 500 kg	168	80	15	132	76	25	56	100	70	14	76