

RL1600 Series

Mild Steel Weigh Modules

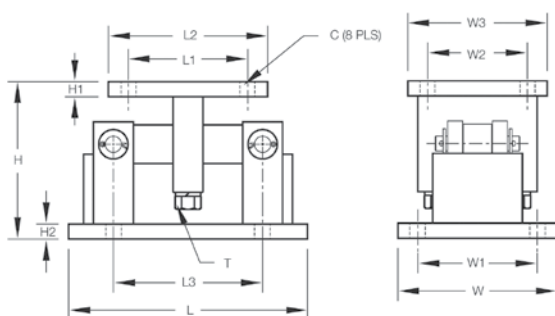


Available in configurations with three or four mounting assemblies.
Picture is a representation of actual product

The RL1600 Series mounting module kit utilizes several Rice Lake Weighing Systems components to provide an unmatched level of performance in tank and hopper weighing applications. The RL1600 Series kit is ideally suited for indoor and outdoor process control operations in the medium- to high-capacity ranges. Each module incorporates self-checking capabilities for thermal expansion and contraction.



Mild steel module with RL75016 double-ended beam load cell.

**Dimensions**

Rated Capacity kg/mm	C	H	H1	H2	L	L1	L2	L3	T	W	W1	W2	W3
453,6 - 2.268,0 kg	14,2	127,0	12,7	12,7	235,0	69,9	101,6	158,8	1/2-13 UNC	127,0	95,3	69,9	101,6
4.535,9 - 11.339,8 kg	19,8	199,9	19,1	19,1	304,8	152,4	203,2	190,5	3/4-10 UNC	203,2	152,4	152,4	203,2
22.679,7 - 34.019,5 kg	19,8	234,9	25,4	25,4	412,8	165,1	228,6	292,1	1 1/4-7 UNC	304,8	241,3	165,1	228,6

Standard Features

- Capacities (per module): 453,6 - 34.019,5 kg
- Self-checking, easy-to-use design allows module to be bolted directly to tank leg without requiring additional mounting plates or load buttons
- Environmentally protected load cells
- Double-ended shear beam design, center loaded
- Painted mild steel construction

Optional Features

- Kits available with VPG® Sensortronics 65016 load cells, capacities (per module): 453,6 - 34.019,5 kg

Applications

- Medium- to heavy-capacity tanks, bins and hoppers
- Bulk material management

Complete Kit Includes

- One JB4SS NEMA Type 4X stainless steel signal trim junction box
- Three or four RL1600 mild steel compression mounts
- Three or four RL75016 double-ended shear beam load cells
- 7,6 m of our hostile environment EL147HE SURVIVOR® load cell cable

Load Cell Certifications

RL1600 Series

Mild Steel Weigh Modules

Order Information

Load Rating (Per Module)	Part #	Price
Single Module (Does NOT Include Load Cell)		
453,6 - 2.268,0 kg	17812	Consult
4.535,9 - 11.339,8 kg	17814	Consult
22.679,6 kg	17816	Consult
34.019,5 kg	25346	Consult
3-Module Kit		
453,6 kg	18117	Consult
680,4 kg	18118	Consult
907,2 kg	18119	Consult
1.134,0 kg	18120	Consult
1.360,8 kg	18121	Consult
2.268,0 kg	18122	Consult
4.535,9 kg	18123	Consult
6.803,9 kg	18124	Consult
9.071,9 kg	18125	Consult
11.339,8 kg	18126	Consult
22.679,6 kg	18127	Consult
34.019,5 kg	25348	Consult
4-Module Kit		
453,6 kg	18129	Consult
680,4 kg	18130	Consult
907,2 kg	18131	Consult
1.134,0 kg	18132	Consult
1.360,8 kg	18133	Consult
2.268,0 kg	18134	Consult
4.535,9 kg	18135	Consult
6.803,9 kg	18136	Consult
9.071,9 kg	18137	Consult
11.339,8 kg	18138	Consult
22.679,6 kg	18139	Consult
34.019,5 kg	25349	Consult

VPG Sensortronics 65016 Order Information

Load Rating (Per Module)	Part #	Price
3-Module Kit		
453,6 kg	18189	Consult
680,4 kg	18190	Consult
1.134,0 kg	18192	Consult
2.268,0 kg	18194	Consult
4.535,9 kg	18195	Consult
6.803,9 kg	18196	Consult
9.071,9 kg	18197	Consult
11.339,8 kg	18198	Consult
22.679,6 kg	18199	Consult
34.019,5 kg	25350	Consult
4-Module Kit		
453,6 kg	18201	Consult
680,4 kg	18202	Consult
1.134,0 kg	18204	Consult
2.268,0 kg	18206	Consult
4.535,9 kg	18207	Consult
6.803,9 kg	18208	Consult
9.071,9 kg	18209	Consult
11.339,8 kg	18210	Consult
22.679,6 kg	18211	Consult
34.019,5 kg	25351	Consult
Dummy Load Cells		
453,6 - 2.268,0 kg	18236	Consult
4.535,9 - 11.339,8 kg	18237	Consult
22.679,6 kg	18238	Consult

Shims, Mild Steel

	Part #	Price
453,6 - 2.268 kg		
1,6	150844	Consult
3,2	150845	Consult
6,4	150846	Consult
4.535,9 - 11.339,8 kg		
1,6	150847	Consult
3,2	150848	Consult
6,4	150849	Consult
22.679,6 - 34.019,4 kg		
1,6	150850	Consult
3,2	150851	Consult
6,4	150866	Consult

Load Cell Upgrade

RL75016SS Stainless Steel Load Cells	
Three mount kits, 453,6 kg to 11.339,8 kg \$ added to list price	
Four mount kits, 453,6 kg to 11.339,8 kg \$ added to list price	
RL75016WHE Stainless Steel Hermetic Load Cells	
Three mount kits 453,6 kg to 2.268 kg, 10k-11.339,8 kg \$ added to list price	
Four mount kits 453,6 kg to 2.268 kg, 10k-11.339,8 kg \$ added to list price	

Contact factory for a 22.679,6 kg to 34.019,4 kg upgrade