

RL1600 Series

Cast Iron Weigh Modules

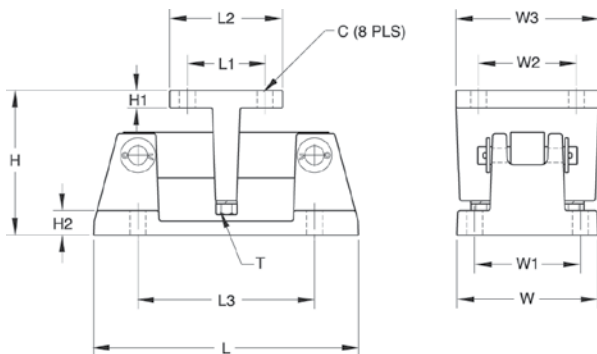


Available in configurations with three or four mounting assemblies.
Picture is a representation of actual product

The RL1600 Series mounting module kit utilizes several Rice Lake Weighing Systems components to provide an unmatched level of performance in tank and hopper weighing applications. The RL1600 Series kit is ideally suited for indoor and outdoor process control operations in the medium- to high-capacity ranges. Each module incorporates self-checking capabilities for thermal expansion and contraction.



Cast iron module with RL75016 double-ended beam load cell.



Dimensions

Rated Capacity	C	H	H1	H2	L	L1	L2	L3	T	W	W1	W2	W3
453,6 - 2.268,0 kg	14,2	127,0	12,7	12,7	236,5	69,9	101,6	158,8	1/2-13UNC	127,0	95,3	69,9	101,6
4.535,9 - 11.339,8 kg	19,8	200,4	19,1	19,1	304,8	152,4	203,2	190,5	3/4-10UNC	203,2	152,4	152,4	203,2

Standard Features

- Capacities (per module): 453,6kg-11.339,8kg
- Cast iron construction
- Self-checking, easy-to-use design allows module to be bolted directly to tank leg without requiring additional mounting plates or load buttons
- Environmentally protected load cells
- Double-ended beam design, center loaded

Optional Features

- Kits available with VPG® Sensortronics 65016 load cells, capacities (per module): 453,6 - 11.339,8kg

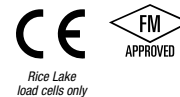
Applications

- Medium- to heavy-capacity tanks, bins and hoppers
- Bulk material management

Complete Kit Includes

- One JB4SS NEMA Type 4X stainless steel signal trim junction box
- Three or four RL1600 cast iron compression mounts
- Three or four RL75016 double-ended shear beam load cells
- 7,6m of our hostile environment EL147HE SURVIVOR® load cell cable

Load Cell Certifications



Order Information

Load Rating (Per Module)	Part #	Price
Single Module (Does NOT Include Load Cell)		
453,6 - 2.268,0 kg	17964	Consult
4.535,9 - 11.339,8 kg	17965	Consult
3-Module Kit		
453,6 kg	25663	Consult
680,4 kg	25664	Consult
907,2 kg	25665	Consult
1.134,0 kg	25666	Consult
1.360,8 kg	25667	Consult
2.268,0 kg	25668	Consult
4.535,9 kg	25669	Consult
6.803,9 kg	25671	Consult
9.071,9 kg	25672	Consult
11.339,8 kg	25674	Consult
4-Module Kit		
453,6 kg	25675	Consult
680,4 kg	25676	Consult
907,2 kg	25677	Consult
1.134,0 kg	25678	Consult
1.360,8 kg	25679	Consult
2.268,0 kg	25680	Consult
4.535,9 kg	25681	Consult
6.803,9 kg	25682	Consult
9.071,9 kg	25683	Consult
11.339,8 kg	25684	Consult

Load Cell Upgrade

RL75016SS Stainless Steel Load Cells	
Three mount kits, 453,6 kg to 11.339,8 kg \$ added to list price	
Four mount kits, 453,6 kg to 11.339,8 kg \$ added to list price	
RL75016WHE Stainless Steel Hermetic Load Cells	
Three mount kits 453,6 kg to 2.268 kg, 10 k-11.339,8 kg \$ added to list price	
Four mount kits 453,6 kg to 2.268 kg, 10 k-11.339,8 kg \$ added to list price	
<i>Contact factory for a 22.679,6 kg to 34.019,4 kg upgrade</i>	

VPG Scentroid 65016 Order Information

Load Rating (Per Module)	Part #	Price
3-Module Kit		
453,6 kg	25685	Consult
680,4 kg	25686	Consult
1.134,0 kg	25688	Consult
2.268,0 kg	25690	Consult
4.535,9 kg	25691	Consult
6.803,9 kg	25692	Consult
9.071,9 kg	25693	Consult
11.339,8 kg	25694	Consult
4-Module Kit		
453,6 kg	25695	Consult
680,4 kg	25696	Consult
1.134,0 kg	25698	Consult
2.268,0 kg	25700	Consult
4.535,9 kg	25701	Consult
6.803,9 kg	25702	Consult
9.071,9 kg	25703	Consult
11.339,8 kg	25704	Consult
Dummy Load Cells		
453,6 - 2.268,0 kg	18236	Consult
4.535,9 - 11.339,8 kg	18237	Consult

Shims, Mild Steel

	Part #	Price
453,6 - 2.268 kg		
1,6	150844	Consult
3,2	150845	Consult
6,4	150846	Consult
4.535,9 - 11.339,8 kg		
1,6	150847	Consult
3,2	150848	Consult
6,4	150849	Consult