

SINGLE-ENDED BEAM

RL1434

Stainless Steel, Hermetically Sealed, C3, IP67



Specifications

- Full Scale Output:**
2,0 mV/V
- Output Resistance:**
350 ohms \pm 3
- Input Resistance:**
350 ohms \pm 3
- Material/Finish:**
Stainless steel
- Temperature:**
-10° C to 40° C
- Seal Type:**
Hermetically sealed, IP69K
- Rated Excitation:**
15V
- Insulation Resistance:**
5.000 Megohms
- Cable Length:**
5 m
- Cable Construction:**
PVC
- Cable Color Code:**
Red+ Excitation
Black.....- Excitation
Green+ Signal
White- Signal
Yellow+ Sense
Blue- Sense

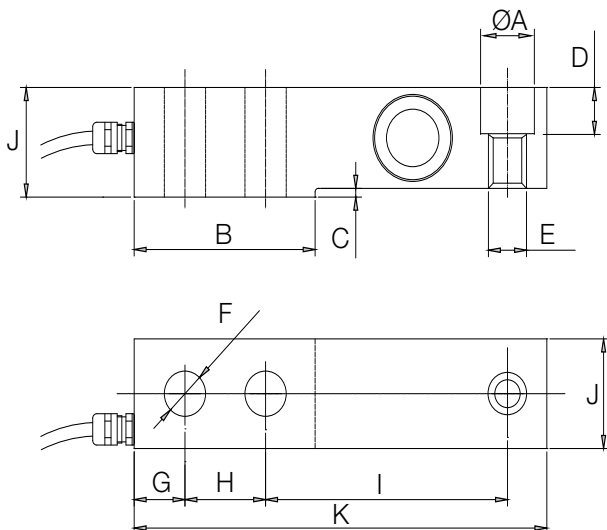
Order Information

Picture is a representation of actual product

Load Rating	Part#	Price
500 kg	173220	Consult
550 kg	173221	Consult
750 kg	173222	Consult
1000 kg	173223	Consult
1100 kg	173224	Consult
1500 kg	173225	Consult
1760 kg	173226	Consult

Dimensions

Nominal Capacity	A	B	C	D	E	F	G	H	I	J	K
mm											
500/750/1000/1500 kg	13,5	57	2,5	13,5	M12	Ø13	16	25,4	76,2	31,5	130
550/1100/1760 kg	20,6	57	2,5	13,5	M12	Ø13	16	25,4	76,2	31,5	130



Warranty:
One-year limited warranty

Approvals:

Complies with
OIML R60 C3
C4 available

