



Picture is a representation of actual product

Approvals

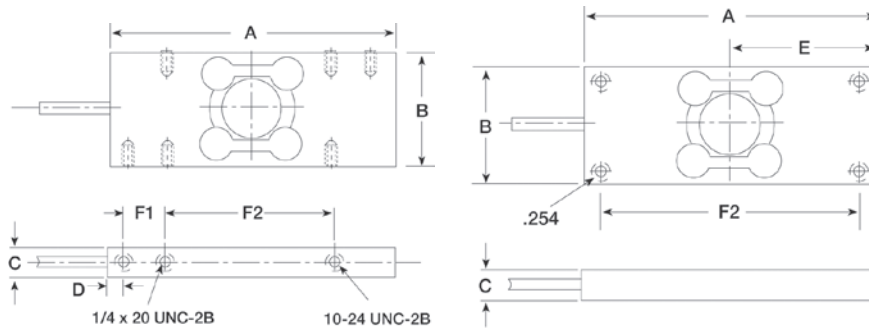


Order Information

Load Rating	Part #	Est. Weight	Price
6 kg	22335	2 lb	Consult
6 kg	116475	2 lb	Consult
25 lb	17406	2 lb	Consult
50 lb	17407	2 lb	Consult
100 lb	17408	2 lb	Consult

Dimensions

Rated Capacity	A	B	C	D	E	F1	F2
kg or lb/mm							
6kg	127.0	50.2	18.5	—	63.5	—	107.9
25 to 50 lb	127.0	50.2	18.5	6.3	—	19.0	76.2
100 lb	127.0	46.2	23.8	6.3	—	19.0	76.2



HPS 6 kg to 100 lb
(PN 22335, 17406, 17407, 17408)

HPS (6 kg)
(PN 116475)

Specifications

- Full Scale Output:**
25 to 100 lb: 3.0 mV/V
6 kg: 2.0 mV/V
- Output Resistance:**
350 (± 7) ohm
- Input Resistance:**
400 (± 6) ohm
- Material/Finish:**
Stainless steel
- Temperature:**
Operating:
0 °F to 150 °F (-18 °C to 65 °C)
- Seal Type:**
Welded-seal, IP67
- Safe Overload:**
150% full scale
- Rated Excitation:**
5 to 10 VAC (15 V maximum)
- Combined Error:**
0.03% full scale
- Non-repeatability:**
0.01% full scale
- Insulation Resistance:**
5,000 megohm
- Cable Length:**
10 ft
- Cable Color Code:**
Green +Excitation
Black -Excitation
White +Signal
Red -Signal
- Warranty:**
One-year limited
- Approvals:**
cFMus