

Relays and Racks

Input/Output Components



OPTO 22 16-channel relay rack



OPTO 22 G4 PN45408

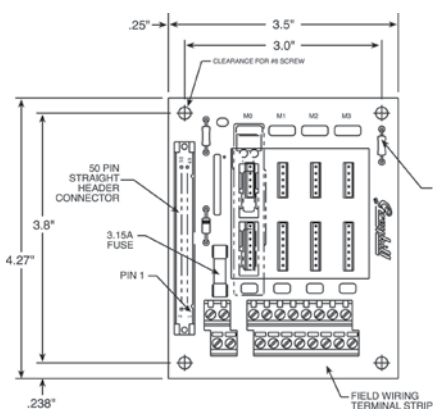


OPTO 22 24-channel relay rack

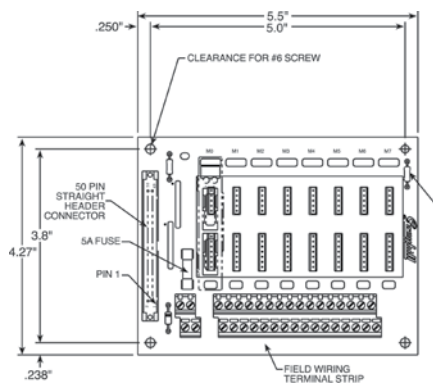


OPTO 22 G4 PN15973

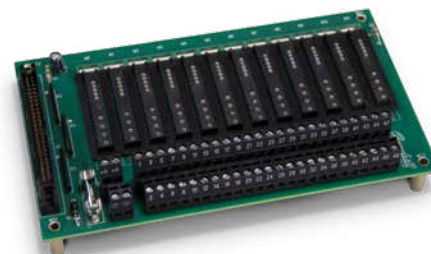
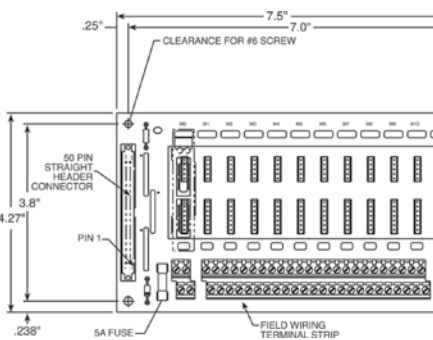
Grayhill Relays and Racks



8-channel relay rack



16-channel relay rack



24-channel relay rack

Input and Output Components/ Grayhill and OPTO 22 Relays and Racks

Part Number/Price

Part #	Description	Price
Input/Output Component		
43942	Allen-Bradley® multi-function relay with digital display	Consult
29616	Dayton multi-function relay	Consult
Other Relays		
15952	Eight-pin octal relay, AC/DC output, 10A, 120 VAC coil	Consult
15960	Eight-pin octal relay, AC/DC output, 10A, 6 VDC coil	Consult
15961	Eight-pin octal socket	Consult
Grayhill Relays and Racks		
52332	Two-channel input relay, 2,5-28 VDC	Consult
52318	Two-channel input relay, 120 VAC	Consult
52319	Two-channel input relay, 240 VAC	Consult
52331	Two-channel input relay, 10-32 VDC	Consult
52316	Two-channel output relay, 120-140 VAC at 2 amp	Consult
52317	Two-channel output relay, 240-280 VAC at 2 amp	Consult
71376	Two-channel output relay, 3-60 VDC t 1 amp	Consult
71377	Two-channel output relay, 0-200 VDC/VAC at 1,5A/10W (dry contact)	Consult
52331	Two-channel input relay, 10-32 VDC	Consult
84698	Two-channel output relay, inductive load, 120-140 VAC at 2A	Consult
84699	Two-channel output relay, inductive load, 240-280 VAC at 2A	Consult
52312	Eight-channel relay rack, 920i panel mount, wall mount requires 50-Pin connector (4 slots)	Consult
52314	16-channel relay rack, 920i panel mount, wall mount requires 50-Pin connector (8 slots)	Consult
52315	24-channel relay rack, 920i panel mount, wall mount requires 50-Pin connector (12 slots)	Consult
46189	Jumper strap, 10 position for Grayhill	Consult
108396	Digital input 5 VDC, 15-30 VAC/10-32 VDC	Consult
108397	Digital output 5 VDC, 3-60 VDC	Consult
70780	Cable, 50-Pin flat ribbon for digital I/O, 609,6 mm	Consult
70779	Cable, 50-Pin round ribbon for digital I/O with cord grip, 1.524 mm	Consult
72442	Cable, 50-Pin round ribbon for digital I/O without cord grip, 1.524 mm	Consult
93577	Cable, 50-Pin flat ribbon for digital I/O, 787,4 mm	Consult
94384	Cable, 50-Pin flat ribbon for digital I/O, 1.270 mm	Consult

OPTO 22 Relays and Racks

Part #	Description	Price
15969	G4IDC5 10-32 VDC Input relay module, white (N/O)	Consult
15970	G40DC5R dry contact 100 VDC/1,5A output, red (N/O)	Consult
22848	G40DC5R5 dry contact 100 VDC/1,5A output, red (N/C)	Consult
15971	G40AC5 115 VAC Output relay module, black (N/O)	Consult
15972	G4IAC5 115 VAC Input relay module, yellow (N/O)	Consult
22847	G40AC5A5 115/230 VAC Output relay module, black (N/C)	Consult
36632	G40AC5A 115/230 VAC Output relay module, black (N/O)	Consult
36631	G4IAC5A 230 VAC Input relay module, yellow (N/O)	Consult
26834	Fuse, 1A 250V (for PN 15970 and PN 22848)	Consult
21735	Fuse, 4A 250V (for PN 15971, PN 22847 and PN 36632)	Consult
16478	Quencharc® arc suppressor	Consult
101923	Remote relay box, does not include relay	Consult
15973	Four-channel relay rack, 83 mm x 83 mm	Consult
45408	Four-channel relay rack 155 mm x 30 mm (non UL)	Consult
33206	16-channel relay rack	Consult
33205	24-channel relay rack	Consult
99032	Adapter plate, for four-channel Opto rack 33490	Consult
155253	Board assembly, DWM IV, eight-channel, Opto 22 GU series compatible, (non UL)	Consult
Relay Boards Fixed Dry Contact Relay		
30549	2-channel 120-240 VAC or 30 VDC/5A	Consult