

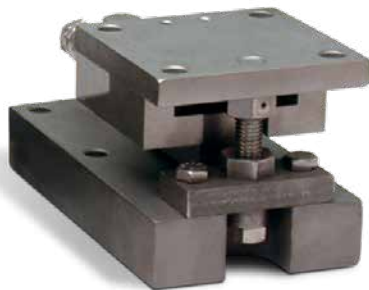
Paramounts® EP

Environmentally Protected, Mild Steel, Light to Medium Capacity Tank Weighing Systems

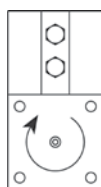


Available in configurations with three or four mounting assemblies.
Picture is a representation of actual product

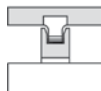
The Paramounts EP system offers all the design advantages of the Paramounts system in applications where extensive sealing of the SB4 load cell is not necessary. Paramounts EP provides a low-cost alternative to the superior mechanical loading system found in the standard Paramounts. Economy and performance are in one complete weighing system.



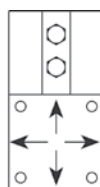
Free-sliding module with Flintec SB5 bending beam load cell.



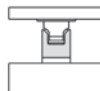
A: FIXED PIN



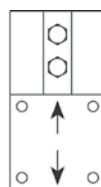
Fixed-pin Mount



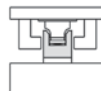
B: FREE SLIDING



Free-sliding Mount



C: SIDE STOP



Side-stop Mount

Standard Features

- Capacities (per module): 1 kN/102,1 kg-100 kN/10.205,9 kg
- NTEP Certified load cells
- Unique design allows for thermal expansion/contraction
- Jacking screw allows empty vessel to be lifted clear of load cell for maintenance
- Unique blind load hole eliminates unwanted side and eccentric loads
- Vessel is free to slide laterally on PTFE-coated surfaces
- Load cell outputs are matched to $\pm 0.07\%$ allowing replacement without further calibration

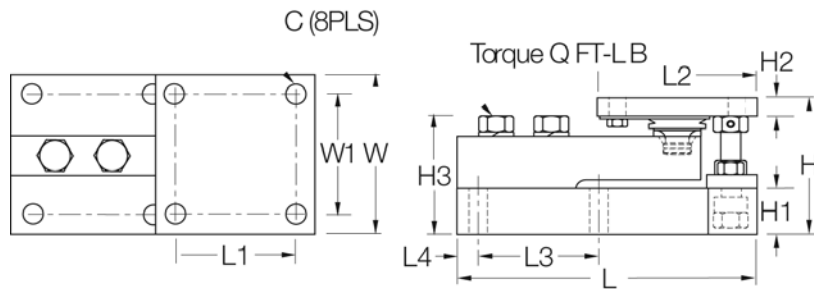
Applications

- Light- to medium-capacity tanks and hoppers
- High-vibration mixers and blenders
- Process measurement and control

Complete Kit Includes

- One JB4SS NEMA Type 4X stainless steel signal trim junction box
- One fixed-pin module, one side-stop module, and one or two free-sliding assemblies. Each module is complete with a Flintec® SB5 NTEP Certified 1:5000 d, Class III, stainless steel environmentally protected load cell.
- 7,6m of our hostile environment EL147HE SURVIVOR® load cell cable

Load Cell Certifications



Dimensions

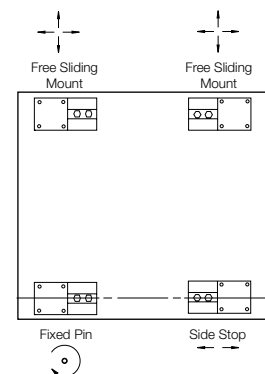
Rated Capacity	C	H	H1	*H2	**H2	H3	L	L1	L2	L3	L4	W	W1	Q (FT-LB)
kg/mm														
510,8 - 2.041,0 kg	11,1	90,9	31,8	12,7	19,1	77,7	190,8	76,2	101,6	76,2	12,7	101,6	76,2	—
5.107,5 kg	14,3	118,4	38,1	15,7	25,4	103,9	233,4	98,3	127,0	98,3	14,2	127,0	98,3	—
10.215,0 kg	17,5	162,8	50,8	19,1	31,8	145,5	291,1	120,7	152,4	120,7	17,5	152,4	120,7	—

Order Information

Load Rating (Per Module)	Part#	Price
3-Module Kits		
510,8 kg	33683	Consult
1.021,5 kg	33682	Consult
2.041,2 kg	33681	Consult
5.107,5 kg	33680	Consult
10.205,8 kg	33679	Consult
4-Module Kits		
510,8 kg	33678	Consult
1.021,5 kg	33677	Consult
2.041,2 kg	33676	Consult
5.107,5 kg	33675	Consult
10.205,8 kg	33674	Consult

* Side-stop and free-sliding units

** Fixed-pin units



VESSEL ARRANGEMENT

When arranged as illustrated, the vessel is fixed at one corner but is able to slide freely as indicated. This ensures that there is minimal side loading on the cells and at the same time the vessel is self-checking. The unique, patented blind load hole technology used in these mounts introduces the load at the neutral axis of the load cell which helps minimize the effects of side loads.