

# Motor Truck Scale Electronic Conversion Kit

Rice Lake Weighing Systems



*Picture is a representation of actual product*

Full electronic performance can be achieved at a fraction of the cost of a new scale and pit. The Motor Truck Scale (MTS) electronic conversion kit is designed to transform an existing scale pit and weighbridge into a fully electronic vehicle scale. Designed for quick installation without removing the platform or reconfiguring the pit, the conversion kit can often be installed in a matter of days, minimizing downtime. This ease of installation is important when considering installations where it is not feasible to completely remove the existing scale.

## Standard Features

- Cost- and time-efficient installation; no need to remove weighbridge
- Converts existing scale capacities of 18.143,7 kg-90.718,7 kg)
- Four, six or eight-mount kits for two, three or four-section conversions
- Translink™ heavy-capacity mounting assemblies
- Free movement in all directions in the horizontal plane with virtually no friction
- Completely self-centering
- Requires no check rods
- Capacity per mount: 11.339,8 - 45.359,4 kg)
- Utilizes cells with 3 mV/V output

## Optional Features

- Custom heights available; consult
- RLWS RL75223 welded-seal, VPG® Sensortronics 65040A or RTI 5223 load cells

## Applications

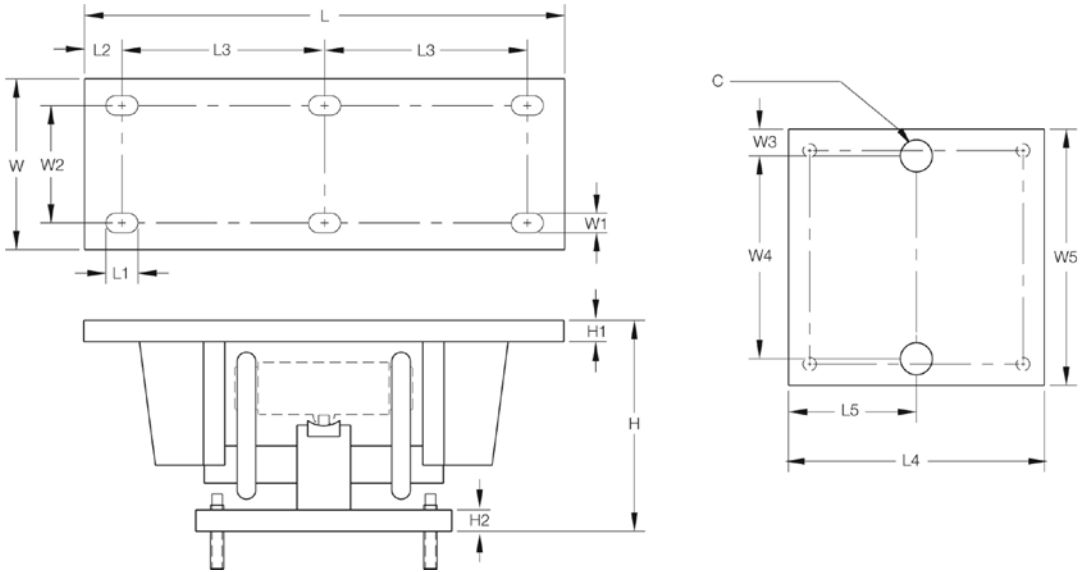
- Updating existing mechanical motor truck scales
- Replacing unsatisfactory electronic motor truck scales
- Conversion of heavy-capacity scales into fully electronic vehicle scales where the existing scale cannot be removed

## Complete Kit Includes

- One JB8SP NEMA Type 4X signal-trim junction box with individual and section trimming capability (six and eight-mount kits) or one JB4SP NEMA Type 4X signal-trim junction box (four-mount kits)
- One UJB3T6 DC transient protector
- Four, six or eight Translink mounting assemblies with RL75040 or RL75223 load cells
- 30,5 m of hostile environment EL147HE SURVIVOR® load cell cable

# Motor Truck Scale Electronic Conversion Kit

Rice Lake Weighing Systems



### Dimensions

Rated Capacity	C	H*	H1	H2	L	L1	L2	L3	L4	L5	W	W1	W2	W3	W4**	W5
22.679,6 - 45.400,00 kg (RL75223)	38,1	328,4	25,4	25,4	571,5	37,5	44,5	241,3	298,5	149,4	196,9	23,1	133,4	31,8	235,0	298,45
11.339,8 - 18.143,7 kg (RL75040A)	38,1	251,0	25,4	25,4	469,9	37,5	44,5	190,5	298,5	149,4	196,9	23,1	133,4	31,8	235,0	298,45
22.679,6 - 34.019,4 kg (RL75040A)	38,1	325,6	25,4	25,4	571,5	37,5	44,5	241,3	298,5	149,4	196,9	23,1	133,4	31,8	235,0	298,45

\*Custom heights available; consult    \*\*Custom hole spacing for existing bolt patterns is available; consult

### Order Information

Scale Suggested Capacity	Load Cell Capacity (Per Module)	Part#	Load Cell Used In Kit	Price
<b>4-Module Kit (Includes Weigh Modules Load Cells, Junction Box, and Transient Protection)</b>				
18,143.7 kg	11,339.8 kg	<b>30513</b>	RL75040A	Consult
27,215.6 kg	18,143.7 kg	<b>30514</b>	RL75040A	Consult
<b>6-Module Kit (Includes Weigh Modules Load Cells, Junction Box and Transient Protection)</b>				
45,359.4 kg	22,679.6 kg	<b>30515</b>	RL75040A	Consult
54,431.2 kg	27,215.6 kg	<b>30516</b>	RL75040A	Consult
<b>8-Module Kit (Includes Weigh Modules Load Cells, Junction Box and Transient Protection)</b>				
54,431.2 kg	27,215.6 kg	<b>30517</b>	RL75040A	Consult
90,718.7 kg	34,019.4 kg	<b>30518</b>	RL75040A	Consult
SD 136,078.1 kg	45,359.4 kg	<b>30512</b>	RL75223	Consult

SD refers to super duty, 45.359,4 kg capacity welded-seal load cells