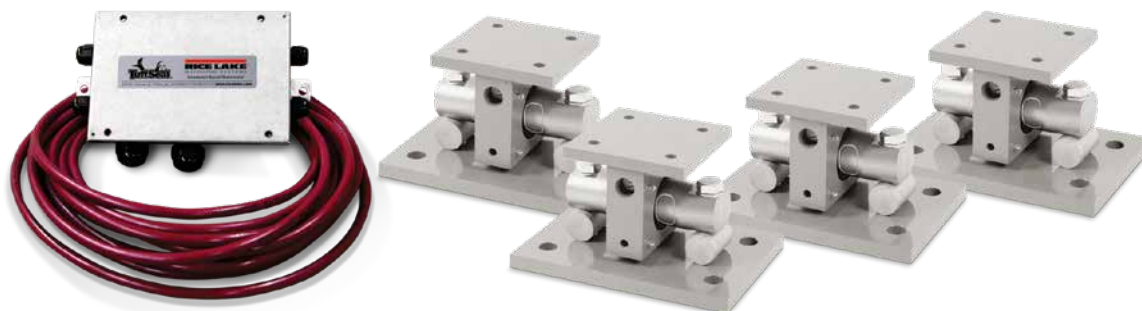


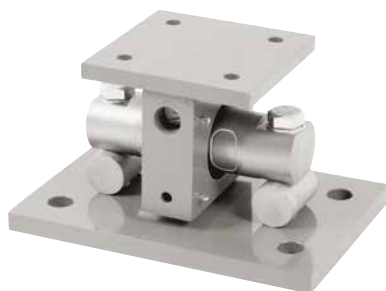
# EZ Mount 1

Stainless Steel Weigh Modules



Available in configurations with three or four mounting assemblies.  
Picture is a representation of actual product

The EZ Mount 1 Series weigh module utilizes the double-ended beam design with an articulating top plate to provide superior accuracy in any loading condition. The double-ended beam design means there is less cumbersome hardware and each module has a lower profile than modules of different configurations. FM approved RL70000 SS Series load cells give you accuracy and dependability in many applications, including intrinsically safe and explosion proof areas.



Module with RL70000 SS double-ended shear beam load cell.

## Standard Features

- Capacities (per module): 2.268 kg-60.039,0 kg
- Unique sliding pin design compensates for thermal expansion/contraction
- Self-checking
- Easy load cell replacement
- Simplified design allows bolting directly to tank and floor
- Center-loaded, double-ended shear beam design
- Low-profile design
- 304 stainless steel construction

## Optional Features

- Kits available with VPG-Revere 9103 load cell, capacities in 2.268,0 - 68.039,0 kg

## Applications

- Medium to heavy-capacity tank and hopper weighing applications

## Complete Kit Includes

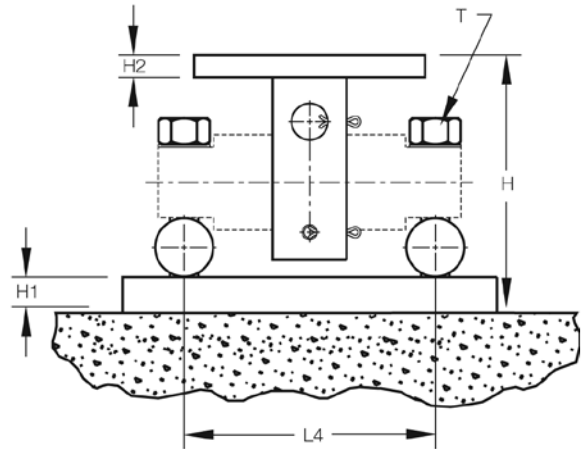
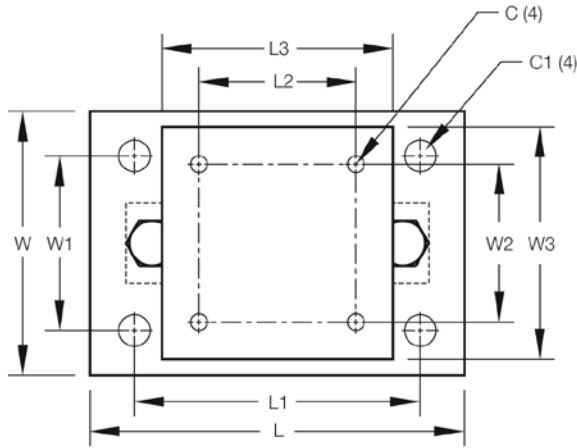
- One JB4SS NEMA Type 4X stainless steel signal trim junction box
- Three or four EZ Mount 1 stainless steel compression mounts
- Three or four RL70000 SS stainless steel double-ended shear beam load cells
- 7,6 m of our hostile environment EL147HE SURVIVOR® load cell cable

## Load Cell Certifications



# EZ Mount 1

Stainless Steel Weigh Modules



## Dimensions

| Rated Capacity         | C    | C1   | H     | H1   | H2   | L     | L1    | L2    | L3    | L4    | T          | W     | W1    | W2    | W3    |
|------------------------|------|------|-------|------|------|-------|-------|-------|-------|-------|------------|-------|-------|-------|-------|
| kg/mm                  |      |      |       |      |      |       |       |       |       |       |            |       |       |       |       |
| 2.268,0 - 9.071,9 kg   | 14.2 | 26.9 | 134.9 | 19.1 | 12.7 | 279.4 | 203.2 | 76.2  | 152.4 | 174.5 | 5/8-18 UNF | 190.5 | 101.6 | 76.2  | 152.4 |
| 13.607,8 - 27.215,5 kg | 17.3 | 30.2 | 214.1 | 25.4 | 19.1 | 381.0 | 292.1 | 130.0 | 203.2 | 215.9 | 1-14 UNS   | 254.0 | 152.4 | 130.1 | 203.2 |
| 45.359,2 kg            | 20.6 | 35.1 | 263.4 | 31.8 | 31.8 | 457.2 | 355.6 | 190.5 | 254.0 | 241.3 | 1-14 UNS   | 304.8 | 228.6 | 190.5 | 254.0 |
| 68.039,0 kg            | 20.6 | 35.1 | 263.4 | 31.8 | 31.8 | 457.2 | 355.6 | 190.5 | 254.0 | 241.3 | 1-14 UNS   | 304.8 | 228.6 | 190.5 | 254.0 |

## Order Information

| Load Rating (Per Module)                          | Part #       | Price   |
|---|--------------|---------|
| <b>Single Module (Does NOT Include Load Cell)</b> |              |         |
| 2.268,0 - 9.071,9 kg                              | <b>17943</b> | Consult |
| 13.607,8 - 27.215,5 kg                            | <b>17944</b> | Consult |
| 45.359,2 kg                                       | <b>17945</b> | Consult |
| 68.039,0 kg                                       | <b>29011</b> | Consult |
| <b>3-Module Kit</b>                               |              |         |
| 2.268,0 kg*                                       | <b>36195</b> | Consult |
| 4.535,9 kg  | <b>36196</b> | Consult |
| 9.071,9 kg  | <b>36197</b> | Consult |
| 13.607,8 kg                                       | <b>36198</b> | Consult |
| 18.143,7 kg                                       | <b>36199</b> | Consult |
| 22.679,6 kg                                       | <b>36200</b> | Consult |
| 27.215,5 kg                                       | <b>36201</b> | Consult |
| 45.359,2 kg                                       | <b>36202</b> | Consult |
| 68.039,0 kg*                                      | <b>43288</b> | Consult |

\*Load cell bolts protrude from bottom of base plate 6,35 mm

## Order Information

| Load Rating (Per Module)             | Part #        | Price   |
|--------------------------------------|---------------|---------|
| <b>4-Module Kit</b>                  |               |         |
| 2.268,0 kg                           | <b>36203</b>  | Consult |
| 4.535,9 kg                           | <b>36204</b>  | Consult |
| 9.071,9 kg                           | <b>36205</b>  | Consult |
| 13.607,8 kg                          | <b>36206</b>  | Consult |
| 18.143,7 kg                          | <b>36207</b>  | Consult |
| 22.679,6 kg                          | <b>36208</b>  | Consult |
| 27.215,5 kg                          | <b>36209</b>  | Consult |
| 45.359,2 kg                          | <b>36210</b>  | Consult |
| 68.039,0 kg                          | <b>43289</b>  | Consult |
| <b>Dummy Load Cells (Mild Steel)</b> |               |         |
| 2.268 - 9.071,8 kg                   | <b>33749</b>  | Consult |
| 13.607,8 - 27.215,5 kg               | <b>74016</b>  | Consult |
| 45.359,2 kg                          | <b>94175</b>  | Consult |
| 68.038,9 kg                          | <b>158715</b> | Consult |
| <b>Grounding Kit</b>                 |               |         |
| 2.268 - 27.215,5 kg                  | <b>126419</b> | Consult |

Includes ground strap and mounting hardware