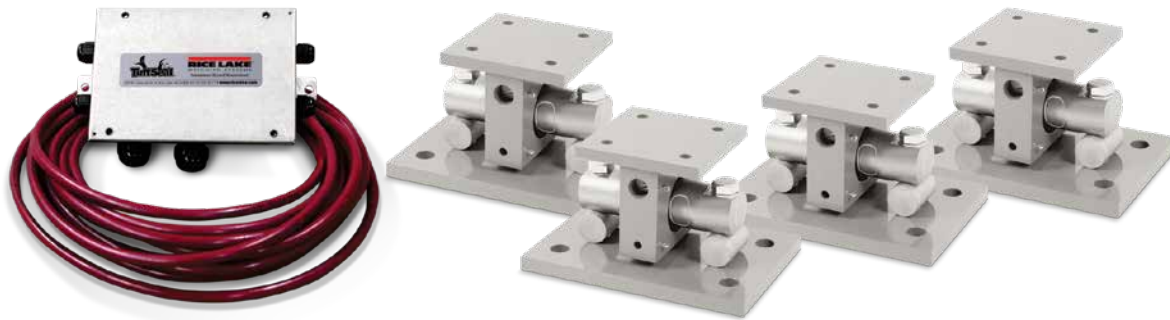


EZ Mount 1

Mild Steel Weigh Modules



Available in configurations with three or four mounting assemblies.
Picture is a representation of actual product

The EZ Mount 1 Series weigh modules utilize the double-ended beam design with an articulating top plate to provide superior accuracy in any loading condition. The double-ended beam design means there is less cumbersome hardware and each module has a lower profile than modules of different configurations. NTEP Certified and FM approved RL70000 Series load cells give you accuracy and dependability in many applications, including intrinsically safe and explosion proof areas.



Module with RL70000 double-ended shear beam load cell.

Standard Features

- Capacities (per module): 2.268 kg-113.398,1 kg
- Unique sliding pin design compensates for thermal expansion/contraction
- Self-checking
- Easy load cell replacement
- Simplified design allows bolting directly to tank and floor
- Center-loaded, double-ended shear beam design
- Low-profile design
- Painted mild steel construction

Optional Features

- Kits available with VPG® Revere 5103 load cell, capacities in 2.268,0 kg-68.039,0 kg)

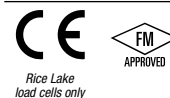
Applications

- Medium- to heavy-capacity tank and hopper weighing applications

Complete Kit Includes

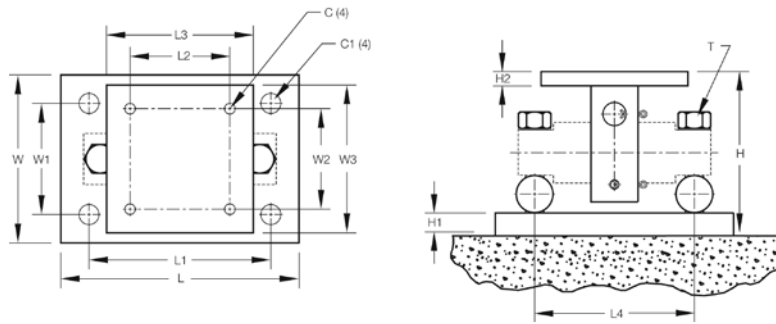
- One JB4SS NEMA Type 4X stainless steel signal trim junction box
- Three or four EZ Mount 1 mild steel compression mounts
- Three or four RL70000 double-ended shear beam load cells
- 7,6 m of our hostile environment EL147HE SURVIVOR® load cell cable

Load Cell Certifications



EZ Mount 1

Mild Steel Weigh Modules

**Dimensions**

Rated Capacity	C	C1	H	H1	H2	L	L1	L2	L3	L4	T	W	W1	W2	W3
kg/mm															
2.268,0 - 9.071,9 kg	14,2	26,9	134,9	19,1	12,7	279,4	203,2	76,2	152,4	174,5	5/8-18 UNF	190,5	101,6	76,2	152,4
13.607,8 - 27.215,5 kg	17,3	30,2	214,1	25,4	19,1	381,0	292,1	130,0	203,2	215,9	1-14 UNS	254,0	152,4	130,1	203,2
45.359,2 kg	20,6	35,1	263,4	31,8	31,8	457,2	355,6	190,5	254,0	241,3	1-14 UNS	304,8	228,6	190,5	254,0
68.039,0 kg	20,6	35,1	263,4	31,8	31,8	457,2	355,6	190,5	254,0	241,3	1-14 UNS	304,8	228,6	190,5	254,0
90.718,5 - 113.398,1 kg	26,9	47,8	425,5	50,8	50,8	660,4	508,0	228,6	304,8	330,2	1 1/2-12 UNS	304,8	152,4	228,6	304,8

Order Information

Load Rating (Per Module)	Part #	Price
Single Module (Does NOT Include Load Cell)		
2.268,0 - 9.071,9 kg	17823	Consult
13.607,8 - 27.215,5 kg	17824	Consult
45.359,2 kg	17850	Consult
68.039,0 kg	29012	Consult
90.719,0 - 113.398,4 kg	26068	Consult
3-Module Kit		
2.268,0 kg	18163	Consult
4.535,9 kg	18164	Consult
9.071,9 kg	18165	Consult
13.607,8 kg	32164	Consult
18.143,7 kg	32167	Consult
22.679,6 kg	18166	Consult
27.215,5 kg	18167	Consult
45.359,2 kg	18168	Consult
68.040,0 kg	43290	Consult
4-Module Kit		
2.268,0 kg	18169	Consult
4.535,9 kg	18170	Consult
9.071,9 kg	18171	Consult
13.607,8 kg	32165	Consult
18.143,7 kg	32166	Consult
22.679,6 kg	18172	Consult
27.215,5 kg	18173	Consult
45.359,2 kg	18174	Consult
68.040,0 kg	43291	Consult

*Load cell bolts protrude from bottom of base plate 6,35 mm

**VPG Revere® 5103 Mild Steel
Order Information**

Load Rating (Per Module)	Part #	Price
3-Module Kit		
2.268,0 kg	18175	Consult
4.535,9 kg	18176	Consult
9.071,9 kg	18177	Consult
13.607,8 kg	32169	Consult
18.143,7 kg	32171	Consult
22.679,6 kg	18178	Consult
27.215,5 kg	18179	Consult
45.359,2 kg	18180	Consult
68.039,0 kg	18181	Consult
4-Module Kit		
2.268,0 kg	18182	Consult
4.535,9 kg	18183	Consult
9.071,9 kg	18184	Consult
13.607,8 kg	32170	Consult
18.143,7 kg	32172	Consult
22.679,6 kg	18185	Consult
27.215,5 kg	18186	Consult
45.359,2 kg	18187	Consult
68.039,0 kg	18188	Consult
Dummy Load Cells		
2.268 - 9.071,8 kg	33749	Consult
13.607,8 - 27.215,5 kg	74016	Consult
45.359,2 kg	94175	Consult
68.038,9 kg	158715	Consult
Grounding Kit		
2.268,0 - 22.679,6 kg, includes ground strap and mounting hardware per mount	126419	Consult