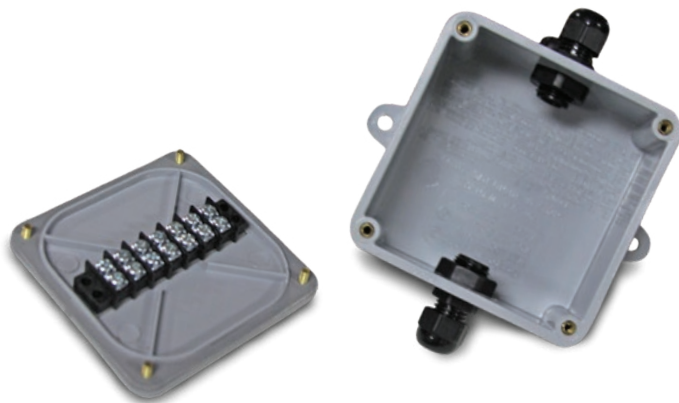


EL168

One-Cell Junction Box



Specifications

Dimensions:

W x L x D 102 x 102 x 64 mm

Mounting Centers:

95 x 59 mm

Cable Fittings:

Nylon waterproof strain-relief type

Cable Diameter:

2 to 8 mm

Terminal Block:

Rated 300V/15A; seven position, screw terminal can each accommodate up to #16 AWG

Warranty:

One-year limited warranty

Standard Features

- Non-metallic PVCX enclosure with separate input and output cable fittings
- No soldering, compression or swagged fittings are required

Applications

- For splicing or extending load cell cable

Part Numbers

| Part # | Description | Price |
|--------|-----------------------------|---------|
| 21161 | EL168 one cell junction box | Consult |

Note: Do not mix junction box models or use other brands of junction boxes with Rice Lake junction boxes. There is a risk of system instability.