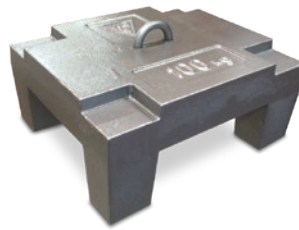


Class M1

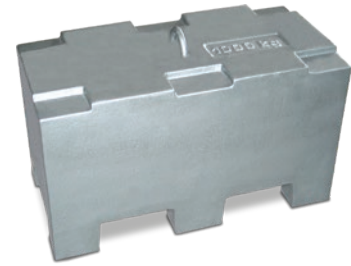
Individual Weights, Cast Iron



PN 189751



PN 189756



PN 189759



PN 189755



PN 189758

Part Number/Price

Class M1			
Weight	Part #	Description	Price
5 kg	189744	Cast Iron, Painted. Density is 7.10 grams per cubic centimeter	Consult
10 kg	189745	Cast Iron, Painted. Density is 7.10 grams per cubic centimeter	Consult
20 kg	189746	Cast Iron, Painted. Density is 7.10 grams per cubic centimeter	Consult
50 kg	189747	Cast Iron, Painted. Density is 7.10 grams per cubic centimeter	Consult
5 kg	189748	Cast Iron, Nickel-Plated. Density is 7.10 grams per cubic centimeter	Consult
10 kg	189749	Cast Iron, Nickel-Plated. Density is 7.10 grams per cubic centimeter	Consult
20 kg	189750	Cast Iron, Nickel-Plated. Density is 7.10 grams per cubic centimeter	Consult
100 kg	189756	Cast Iron, Painted. Density is 7.10 grams per cubic centimeter	Consult
200 kg	189757	Cast Iron, Painted. Density is 7.10 grams per cubic centimeter	Consult
500 kg	189758	Cast Iron, Painted. Density is 7.10 grams per cubic centimeter	Consult
1.000 kg	189759	Cast Iron, Painted. Density is 7.10 grams per cubic centimeter	Consult
500 kg	189760	Painted Steel. Density is 7.80 grams per cubic centimeter	Consult
1.000 kg	189761	Painted Steel. Density is 7.80 grams per cubic centimeter	Consult
2.000 kg	189762	Painted Steel. Density is 7.80 grams per cubic centimeter	Consult
Case Options			
Weight Holder, 20 kg	189751	Stainless Steel. Suitable For Holding Up To 24 OIML 20 kg Weights, For A Total Combined Weight Of 500 kg. Dimensions - 832 x 518 x 387 mm	Consult
Weight Case, Wooden	189753	For Individual Weights, 5 kg Cast Iron. Weight Sold Separately	Consult
Weight Case, Wooden	189754	For Individual Weights, 10 kg Cast Iron. Weight Sold Separately	Consult
Weight Case, Wooden	189755	For Individual Weights, 20 kg Cast Iron. Weight Sold Separately	Consult
Calibration			
Calibration, ISO 17025	189741	For Individual Weight, 5 kg Class M1 ACCREDIA	Consult
Calibration, ISO 17025	189742	For Individual Weight, 10 kg Class M1 ACCREDIA	Consult
Calibration, ISO 17025	189743	For Individual Weight, 20 kg Class M1 ACCREDIA	Consult
Calibration, ISO 17025	189752	For Individual Weight, 50 kg Class M1 ACCREDIA	Consult
Calibration, ISO 17025	189763	For Individual Weight, 100 kg Class M1 ACCREDIA	Consult
Calibration, ISO 17025	189764	For Individual Weight, 200 kg Class M1 ACCREDIA	Consult
Calibration, ISO 17025	189765	For Individual Weight, 500 kg Class M1 ACCREDIA	Consult
Calibration, ISO 17025	189766	For Individual Weight, 1,000 kg Class M1 ACCREDIA	Consult
Calibration, ISO 17026	189767	For Individual Weight, 2,000 kg Class M1 ACCREDIA	Consult