

# AC-3000FN

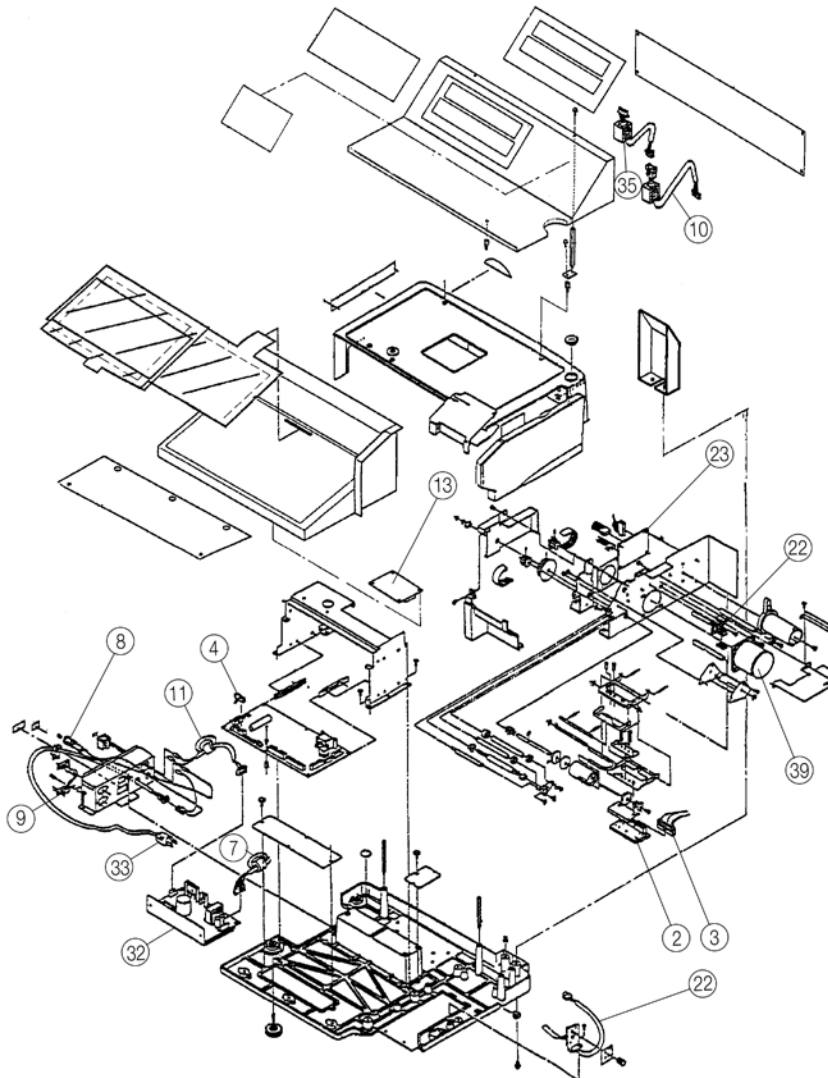
Electrical Assembly



## Part Number/Price

| Ref# | Part# | Description   | Price   |
|------|-------|---|---------|
| 2    | 45237 | Print head, thermal, 36-2636-16                           | Consult |
| —    | 48239 | Screw, button head, M3x6 printhead mount                  | Consult |
| 3    | 45238 | Harness, SW, thermal head, 36-3354-10                     | Consult |
| 4    | 46998 | Harness, S2, key, 36-3355-04                              | Consult |
| 7    | 45240 | Harness, S2, power supply, 36-3359-18                     | Consult |
| 8    | 45241 | Fuse, assembly, 36-3404-12                                | Consult |
| 9    | 45242 | Harness, C3, I2NET 38-6512-08                             | Consult |
| 10   | 47001 | Harness, C2, display 1, 38-3898-04                        | Consult |
| 11   | 45244 | Harness, C3, power supply, 36-3405-16                     | Consult |
| 13   | 47006 | Board, buzzer, P-862, P-887, 89-0450-57                   | Consult |
| 22   | 47004 | Sensor Unit, label, 39-1585-27                            | Consult |
| 23   | 46997 | PWB, sensor board, P-838A, with o interrupter, 43-2052-00 | Consult |
| —    | 47221 | Fuse, pico, 1A, 125V, 38-6725-04, 50-6040-07              | Consult |
| 32   | 77975 | Power supply, switch, SWD 100P 102-9575-06                | Consult |
| —    | 77889 | Fuse, power supply, 5A, 250V, 5x20                        | Consult |
| 33   | 45133 | Power cord, 6 ft 40-3871-14                               | Consult |
| 35   | 47002 | Harness, C2, display 2, 42-1183-12, 40-3870-01            | Consult |
| 39   | 45175 | Motor assembly, stepping, 40-3898-14                      | Consult |

(Diagram AC-3000FN-B)



AC-3000FN-B

Parts not listed are no longer available. Some parts listed may not be available.

An ISO 9001 registered company © 2019 Rice Lake Weighing Systems 05/19 Prices and specifications subject to change without notice. Visit [ricelake.com](http://ricelake.com) for current prices.

Discontinued Scales