

680HE Synergy Series

Hostile Environment Digital Weight Indicator

INDICATORS / CONTROLLERS



Approvals



Measurement
Canada
Approved



Part Number/Price

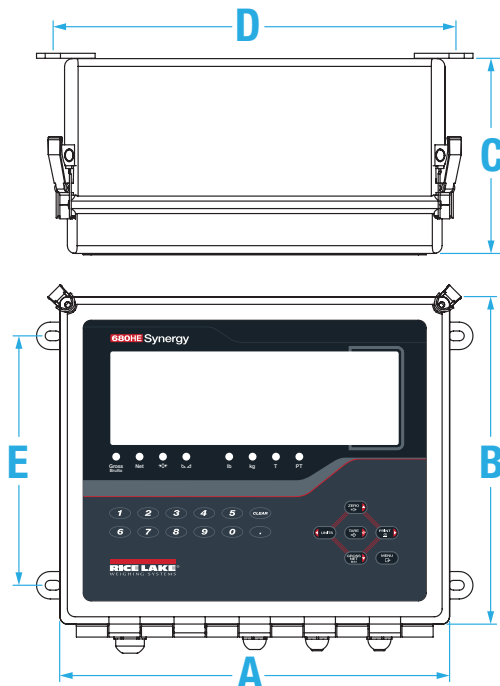
Part #	Description	Est. Weight	Price
197177	680HE Plus indicator, 115 to 230 VAC	6.25 lb (3 kg)	Consult
199574	680HE Plus indicator, 115 to 230 VAC with external RJ45	6.25 lb (3 kg)	Consult

Options/Accessories

Part #	Description	Price
195084	Analog output option card	Consult

Dimensions

680HE Synergy Series			
A	12.50 in (318 mm)	D	13.00 in (330 mm)
B	10.50 in (267 mm)	E	8.00 in (203 mm)
C	6.30 in (160 mm)		



Standard Features

- LED display
- Battery backed time and date
- Full numeric keypad
- Multiple communication ports
- Eight setpoints, 22 configurable types
- Numeric keyed entry for tare and setpoint entry
- Formattable tickets
- Four onboard configurable digital I/O points, TTL logic
- Local/remote

Options

- Ethernet bulkhead connector
- Analog output: 16-bit resolutions, 0 - 10 VDC, 0 - 20 mA, 4 - 20 mA

Specifications

Power:

Line voltages: 100 to 240 VAC
Frequency: 50/60 Hz

Power Consumption:

12 W (AC) with one 350 ohm load cell, 30 W max

Excitation Voltage:

10 VDC (± 5 VDC), 8 \times 350 ohm or 16 \times 700 ohm load cells

Analog Signal Input Range:

-0.5 mV/V to +7 mV/V

Analog Signal Sensitivity:

1 μ V/graduation recommended

A/D Sample Rate:

6.25 to 120 Hz, software selectable

Resolution:

Internal: 8,000,000 counts
Display: 100,000

System Linearity:

Within 0.01% full scale

Digital I/O:

Four configurable I/O-5 V logic

Communication Ports:

Two full-duplex RS-232
RS-485/422 (five-wire)
Micro USB (device)
Ethernet TCP/IP (10/100)

Annunciators:

Eight LED annunciators

Display:

Six 2.5 in tall, seven-segment digits

Keys/Buttons:

Flat membrane panel, tactile feel
(18 buttons)

Dimensions:

(L \times W \times H)
12.50 \times 6.30 \times 10.50 in
(318 \times 160 \times 267 mm)

Temperature:

Certified: 14 $^{\circ}$ F to 104 $^{\circ}$ F (-10 $^{\circ}$ C to 40 $^{\circ}$ C)
Operating: 14 $^{\circ}$ F to 122 $^{\circ}$ F (-10 $^{\circ}$ C to 50 $^{\circ}$ C)

Rating/Material:

IP66, FRP

Weight:

7.9 lb (3.5 kg)

Warranty:

Two-year limited

EMC Immunity:

10 V/m

Approvals:

NTEP 19-021, Class III/IIIL, 10,000 d
Measurement Canada AM-6121C
CE Marked
UKCA
cULus Listed
IEC